



## **AGENDA**

### **CHISHOLM CREEK UTILITY AUTHORITY**

**April 23<sup>rd</sup>, 2026**

Bel Aire City Hall, 7651 E Central Park Ave, at 4:30 PM

1. Call to Order
2. Roll Call
3. Adopt Agenda
4. Approve Minutes
5. Public Forum
  
6. Reports
  - a. Commissioner Reports
  - b. Review CCUA RAIL
  - c. Utility Manager Report
  - d. Wastewater Treatment Plant Performance
  - e. Water Treatment Plant Performance
  - f. Attorney Report
  - g. Treasurer Report
    - i. Appropriations
    - ii. Financial Reports
  
7. Unfinished Business
  - a. Wastewater Expansion Project Change orders
  - b. Consider Purchase Orders 7213 & 7214
  
8. New Business
  - a. 2027 Budget Presentation
  - b. Discussion about seeking an On-Call Engineer for CCUA
  - c. Discussion about adding concrete parking around lab/office.
  
9. Executive Session (if needed)
  
10. Adjournment



## Minutes

### CHISHOLM CREEK UTILITY AUTHORITY

March 26<sup>th</sup>, 2026

Bel Aire City Hall, 7651 E Central Park Ave, at 4:30 PM

1. Call to Order
  - a. Brandi Baily calls the meeting to order at 4:32 pm.
2. Roll Call
  - a. Emily Hamburg calls the roll, members present are Terry Osburn, Jim Schroeder, Jim Benage, Brandi Baily, and Greg Davied.
  - b. Others present are as follows:
    - i. Anthony Kientz and John Annen with CCUA
    - ii. Reece Heibert representing CCUA
    - iii. Colton Woodard and Doug Goetz with Wilson & Co.
    - iv. Brain Meier, Rebecca Lewis, and David Naumann with Burns & McDonnell.
    - v. Maria Schrock with Bel Aire.
    - vi. Ryan Cummins with Park City.
3. Adopt Agenda
  - a. Terry Osburn motions to adopt the agenda as presented. Jim Benage seconds the motion, motion passes 6-0.
4. Approve Minutes
  - a. Jim Benage motions to approve the minutes from the February 26<sup>th</sup>, 2026, meeting. Jim Schroeder seconds the motion, motion passes 6-0.
5. Public Forum
  - a. No members from the public are present.
6. Reports
  - a. Commissioner Reports
    - i. No reports.
  - b. Burns and McDonnell Cost-of-Service Report
    - i. David Naumann presents a cost of service report to the board and fields questions. The report covers 2025 flows and strength data for drinking water and wastewater.
  - c. Review CCUA RAIL



from Evergy and comply with future requirements. Change Order #8 will provide speed controls for the new Belt filter press. This is the first time the board is hearing about this change order as there was nothing in the packet about it.

- ii. Jim Benage motions to approve the Change Order #6 for Electrical Service upgrades for a cost not to exceed \$124,892.70. Jim Schroeder seconds the motion, motion passes 6-0.
- iii. The board takes no action on Change order #8, but requests more information from the Utility Manager.

b. Consider Lime Silo Engineering Services Proposals

- i. Anthony Kientz reports that only one proposal was received for this project after reaching out to 5 different firms.
- ii. Terry Osburn motions to expand the search and gather more proposals for this project. Greg Davied seconds the motion, motion passes 6-0.

8. New Business

a. Consider purchase order 7215 to Inland Potable Services for basin cleaning and inspections on the Flash mix and Recarb basins.

- i. Greg Davied motions to approve Purchase Order 7215 to Inland Potable Services for Basin cleaning and inspection services, for a price not to exceed \$10,650. Terry Osburn seconds the motion, motion passes 6-0.

b. Consider purchase orders 7213 and 7214 for the repair/replacement of the WTP Sludge pump and WWTP Supernatant pump.

- i. Anthony Kientz reports that he is still waiting for replacement quotes.
- ii. Emily Hamburg motions to table this item until the next regular meeting. Jim Benage seconds the motion, motion passes 6-0.

9. Executive Session

- a. No executive session is needed.

10. Adjournment

- a. Terry Osburn motions to adjourn the meeting. Jim Schroeder seconds the motion, motion passes 6-0.
- b. The meeting is adjourned at 5:31 pm.

Minutes by Anthony Kientz

---

X

---

Brandi Baily  
Chairwoman

DRAFT

### CCUA Rolling Action Item Log - April 23rd, 2026

Item #	Item	Assigned to	Status	Priority
5	Wastewater Expansion Construction Substantially Complete	CCUA	Due NTL 10-31-2027 per KDHE	Moderate
6	Expanded Wastewater Compliant with KDHE limits	CCUA	Due NLT 05-01-2028 per KDHE	Moderate
10B	Recommendations for any potable water needed capacity improvements (Meters issue split to 10A) Including ROI for storage capacity upgrades	TAC	Recommendations for Water capacity issues, if needed. Assigned to TAC on 9/26/2024.  11/6/2024 update - waiting to see how EPA project affects CCUA Treatment plant. 3/26/26 Added Storage Capacity upgrade ROI	Moderate
12	Tracking of EPA mitigation project	Tony	Discussion held on 7-26-2024 - Looking to learn about effects on water rights - Tony sent follow-up e-mail 2-13-2025 concerning water rights.  On 4/24/2025 Tony reports that Isabela from the EPA is working with KDHE to assure they have all the appropriate design approvals so that they can move forward with their project.  EPA has started mobilization for their work. EPA expects work to begin in September, starting with the demolition of the 57th and Broadway site. The pre-construction meeting was held on September 10th at the Park City Library. Work at the 57th and Broadway site began that same day. Russ Ewy with Baughman submitted a Conditional Use Permit to the COW on CCUA's behalf, the Planning commission voted to approve the conditional use on Decemeber 4th. The District Advisory Board voted to recommend the conditonal use on Decemeber 8th. The Wichita City Council meeting is on January 6th for final approval. The Planning commission is requireing minimal screening for the front of the property, should be low cost (chain link slats). Meeting on 4/20/26 with KDHE and EPA about reuse.	Low
15	CCUA with B&M begin Pretreatment Testing per Contract ¶ 1.8	Tony/B&M	Starting 1-1-2025 On 4/24/2025 Rebecca Lewis from Burns & McDonnell reported initial testing results and the impact those could have on each city. Burns & McDonnell to give report at March meeting.	High
17	EPA start supplying water to CCUA	Isabel at EPA	Tentative July 2026	Low
18	EPA potential contract(S) with CCUA	Isabel at EPA	Potential in discussion of July 26, 2024, but need to ask, from time to time, the status with EPA. During pre-construction meeting Kemron stated that they would be operating the GETS for an unknown period of time before handing it off to CCUA.	Low
19	Draft RFP for Security System upgrade	Tony	Added at suggestion of Justin Smith 8/22/2024. 11/6/2024 update - Awaiting for Wastewater upgrade. OneSource Technology is planning to get us a quote for this once the onboarding process is complete.	Low
20	See if there is interest in a shared spares agreement among area utilities	Tony	Added at suggestion of Justin Smith 8/22/2024.  11/6/2024 update - Tony reached out to KMU about the possibility of sharing our list of obsolete equipment with all KMU members.	Low
21	Begin identifying spare items in inventory that will be obsolete once plant upgrade is complete. Look for opportunities to sell the surplus items	Tony	Added by Jim Benage 8/24/2024.  11/6/2024 update - Tony reached out to KMU about the possibility of sharing our list of obsolete equipment with all KMU members. 02-26-26 update - Tony created list of obsolete equipment with serial numbers, ready to distribute when project is closer to demo phase.	Low
23	Lime Silo rehabilitation and painting project	Burns & McDonnell	Added by Tony 8/18/2025. Burns & McDonnell proposal due for December meeting. RFP was sent in Early March, with follow up emails sent the following week.	Moderate
24	Park City Well #8 Offset and Re-Drill	Burns & McDonnell	Added by Tony 9/15/2025. Burns & McDonnell proposal due for December Meeting.	Moderate
26	2026 RFP List - Well Maintenance, Insurance, Sludge Hauling,	Tony	Added by Tony 4/17/2026 We need to get new contracts for these prior to 2027.	High



## Utility Manager Report

### Chisholm Creek Utility Authority Board Meeting

April 23<sup>rd</sup>, 2026

#### Water Treatment Plant:

1. Bel Aire received 17,723,000 gallons of drinking water from CCUA in March and has averaged 851,080 gallons per day in the first week of April. Park City received 20,389,000 gallons of drinking water from CCUA in March and has averaged 780,613 gallons per day for the first week of April.
2. We pulled and replaced the High Service Pump #2 motor on April 9<sup>th</sup>. This was a preventative maintenance practice because it sounded like the bearing was nearing the point of failure. These are very expensive motors (125hp Vertical Hollowshaft) and if the lower bearing were to fail it would likely cause an arc in the windings and completely destroy the motor. We plan on sending this motor to B&B Electric and have them dry and recoat the windings, then install new bearings and exterior paint.

#### Wells:

CATEGORY	REMAINING (GALLONS)	TOTAL AUTHORIZED (GALLONS)	PERCENT REMAINING
PARK CITY WELLS	258,620,000	317,332,000	81.5%
BEL AIRE WELLS	101,383,000	154,880,000	65.5%
CCUA WELLS	453,073,000	499,000,000	90.8%
<b>TOTAL RIGHTS</b>	<b>813,076,000</b>	<b>971,212,000</b>	<b>83.7%</b>

1. I filed our Verified Claim Forms with the Groundwater Management District 2 on April 1<sup>st</sup>. These forms reflect the actual amount of water used at each point of diversion in the previous year, and that amount gets used for our annual assessment instead of the assumption we used 100% of the water right.

#### Distribution System:

1. Park City is planning to take the 85<sup>th</sup> street tower offline for maintenance in the near future. Since the current crew hasn't done this before, they wanted to give it a trial run. We started letting the tower drain on April 2<sup>nd</sup> and it got down to around 12ft before they shut the valve. This was pretty good and should minimize the amount of water loss due to draining. We could get it lower, but that would involve lowering the Wendell tower to less than 6ft, and I don't think that is a good idea.

2. David Kitchen with Platinum Fire was conducting a flow test for a new warehouse on Broadway on April 9<sup>th</sup>. Apparently, the flow test went great, and we didn't see hardly any pressure drop.

#### Wastewater Treatment Plant:

1. CCUA treated a total of 19,798,000 gallons of wastewater for the city of Bel Aire in the month of March, for an average of 638,645 gallons per day.
2. CCUA treated a total of 23,866,400 gallons of wastewater for the city of Park City in the month of March, for an average of 769,884 gallons per day.
3. On March 30<sup>th</sup> the blower silencer came apart. You can think of this as a very large muffler on a car. We use them to keep the sound levels manageable. As you can see in the picture to the right, this silencer vibrated the internal baffling loose and blew a hole in the sidewall. A brand new replacement was about 6 weeks out, and I called every distributor in the country, but no one had stock. For that reason, I decided to fix the hole and reuse the one that blew up. Austin had never welded sheet metal before, but I was able to teach him the basics, and he was able to put a good solid patch over the hole. We also pulled the broken baffling out. It has been running since March 31<sup>st</sup> like this, and aside from it being noticeably louder, it seems fine.
4. The main PLC for the wastewater treatment plant started having issues with cycle times on April 1<sup>st</sup>. This is an issue I have never seen before; it was like it forgot what cycle was next for SBR 1&2. Normally, after aerated fill the SBR would go into the React step, then Settle, and finally Decant. However, it was not going into React, it would just enter an idle state and go offline. This happened twice and after the second time we decided to completely power down the PLC and reset everything. John was there after hours, and he was able to get it all reset and the issue has not reappeared since.
5. We had two level transducers fail on April 2<sup>nd</sup> and 3<sup>rd</sup>. The level transducer for SBR 3 was sporadic and causing the high level alarm to go off occasionally. This was a good learning opportunity for Jake as it happened during working hours when we could work on it together. Then on the 3<sup>rd</sup> the Headworks wet well level transducer started acting sporadic as well. This could have actually caused damage since it directly controls the pumps in the wet well. It was calling for them to run, then stop multiple times a minute. We are lucky this happened during work hours, and it was caught early. Replacing this transducer was not so straightforward. The underground conduit must have shifted and pinched the transducer cable because we could not pull the cable out. So, we drilled a hole in the wall and in the hatch, then installed the new transducer. We plan on making a permanent fix to this in the near future, but we may need input from an electrician on the best route for the new conduit.
6. The VFD for SBR3 Blower 3A had an internal fault that caused a dead short on April 13<sup>th</sup>. We identified the root cause of the failure inside the disconnect by the blower. One of the three conductors was rubbing against the inside of the disconnect and shorted, which in turn probably caused a huge amp draw and shorted the VFD as well. We were able to get a New VFD from Grainger and we had enough wire inside the disconnect to cut out the shorted section and



reconnect it. Jake installed the new VFD under my supervision on the 16<sup>th</sup> and we got the blower back up and running.

Wastewater Plant Expansion Project:

1. Please see the Progress meeting minutes, Progress tracking spreadsheet, and the Change Order tracking table on the following pages. You will notice that the Work Completed is at 26% and we have used 41% of the days in the schedule. Most of the work completed so far has been concrete, which takes a long time. Once the concrete is cured, the pace is going to rapidly pick up. The piping and equipment should go pretty fast, as of right now BRB seems comfortable with the progress made.

Collection System:

1. Bel Aire contacted me about dumping their lift station cleaning debris at the plant. We have done this before, but we are not really designed for a Vac Truck to dump. It makes quite a mess, but the city workers are always good about cleaning any mess they make. For the time being both cities are welcome to dump their lift station debris through the grating into our HW wet well. There is really no other place that will allow this, so CUA will do what we can to help.

Other:

Significant Purchase Orders since the last meeting:

7219	NCI	\$1,841.00	3/30/2026	SBR 2 Blower Silencer
7224	Wichita Pump Supply	\$1,014.30	3/12/2026	Grinder Pump for SBR 1&2 Basement
7225	Brains Heating and Air	\$2,028.00	3/27/2026	Repairs to both office air conditioners
7229	Certified laboratories	\$2,100.00	4/10/2026	Oil for air compressors
7231	USABlueBook	\$1,182.00	4/10/2026	HW Wetwell Transducer and Hach sampler junction box
7232	Grainger	\$8,437.52	4/14/2026	PTAC for SRB 3, Replacment VFD for SBR 3 Blower A
7234	OneSource Technology	\$1,582.00	4/15/2026	New laptop computer

1. Emily Hamburg and her son's Scouts of America Troop stopped by the plant on April 13<sup>th</sup> for a tour. The Scouts were learning about water conservation, and I think they had a good time checking out the Water and Wastewater plants.

By Anthony Kientz







CCUA Wastewater Expansion  
Progress Tracking

Item No.	Scheduled Value (\$)	Work Completed			Materials Currently Stored (\$)	Work Completed and Materials Stored to Date (\$)	% of Scheduled Value Completed (%)	Balance to Finish (\$)
		From Previous Applications (\$)	This Period (\$)	% of Work Completed to date (%)				
General Sitework	6,639,950.00	2,431,111.10	1,800.00	37%	793,328.05	3,226,239.15	49%	3,413,710.85
SBR 1 & 2 Facility	5,246,235.00	2,232,029.31	130,844.11	45%	876,608.34	3,239,481.76	62%	2,006,753.24
UV & Filter Building	2,453,995.00	200,804.87	20,018.86	9%	475,480.99	696,304.72	28%	1,757,690.28
Influent Splitter Box	492,500.00	2,500.00	-	1%	84,338.55	86,838.55	18%	405,661.45
Digester Complex	476,500.00	-	-	0%	96,004.05	96,004.05	20%	380,495.95
Sludge Building	1,041,350.00	75,048.90	52,267.56	12%	672,944.72	800,261.18	77%	241,088.82
SBR 3&4 Facility	3,264,600.00	-	-	0%	547,843.36	547,843.36	17%	2,716,756.64
Equalization Basin #2	169,700.00	-	-	0%	-	-	0%	169,700.00
Reuse Tank	175,000.00	-	-	0%	21,683.20	21,683.20	12%	153,316.80
Lime Thickeners	252,000.00	-	-	0%	21,683.20	21,683.20	9%	230,316.80
Odor Control Bldg	36,600.00	-	-	0%	-	-	0%	36,600.00
Headworks/Influent Pump Station	177,000.00	19,910.39	1,059.24	12%	24,164.84	45,134.47	25%	131,865.53
Change Orders	178,668.90	53,776.73	2,750.00			56,526.73	32%	122,142.17
<b>Totals</b>	<b>20,425,430.00</b>	<b>5,015,181.30</b>	<b>208,739.77</b>	<b>26%</b>	<b>3,614,079.30</b>	<b>8,838,000.37</b>	<b>43%</b>	<b>11,587,429.63</b>

Construction Schedule	Days for Completion	Current Day	% of Days used
	839	347	41%

### Change Order Tracking

Number	Date	Price	Type	Description	Approved	Notes
0	7/30/2025	\$25,225.00	Deduction	Price reduction from the following: Fence was stopped short on the north side, Headworks pump disconnects were downsized, main generator was downsized.	Yes	This is not really a change order, but it is included.
1	8/29/2026	\$45,313.68	Price increase	Price increase on several items due to tariffs.	Yes	
2	8/29/2026	\$23,210.10	Adder	Relocating the existing gate to the south entrance	No	The board voted note to approve this at the September 25th, 2025 Meeting
3	8/29/2026		Adder	Troubleshooting the ATS on the Headworks generator		Ongoing, waiting on price
4	1/12/2026	\$28,287.86	Adder	Relocating gas line to sludge building so construction on pad can continue	Yes	The board voted to approve this at the January 22nd, 2026 meeting
5	1/12/2026	\$5,400.19	Adder	Replace HW fiber optic cable with 50 micron cable so all FO cable onsite matches	Yes	This change order was approved by the Utility Manager
6	2/20/2026	\$124,892.17	Adder	Electrical service upgrades, Evergy minimum standards	Yes	Approved by the Board on March 26th, 2026
7			Adder	Headworks Grit pump piping		Ongoing, saving contingency funds
8	2/20/2026	\$44,980.10	Adder	Belt Press sludge pump VFDs, to give sludge speed control capability		Ongoing



## Wastewater Treatment Plant Performance Report

Influent Sample Results March 2026				
Date Collected	BOD Concentration in mg/l Design parameter 239	Pounds of BOD Design parameter 4305	TSS Concentration in mg/l Design parameter 239	Pounds of TSS Design parameter 4305
3/4/2026	169	1723.8	255	2601.0
3/12/2026	246	3227.2	167	2190.8
3/18/2026	270	2560.3	273	2588.7
3/24/2026	276	3422.8	375	4650.6

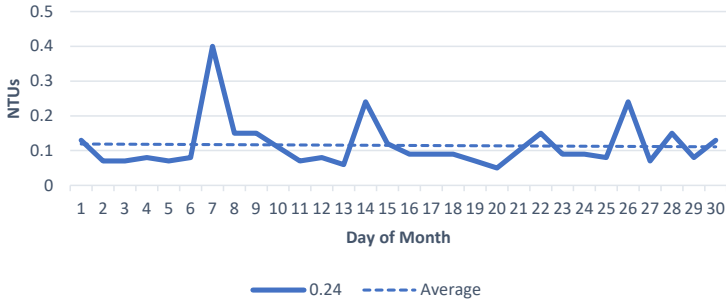
We are struggling with our effluent TSS. We have investigated the possibility that we have a hole in one of our decanters, but that seems unlikely since there are times that we have really good decants on all three SBRs. My only conclusion is that we are not able to keep up with the solids loading with our current sludge management equipment. The Primary Digester is constantly full and that keeps us from wasting sludge from our SBRs. Our only option is to increase our belt press run time, but that will be a challenge since we already run it 30+ hours per week.

Effluent Sample Results March 2026						
Date Collected	BOD Concentration in mg/l	BOD Permit Limit	TSS Concentration in mg/l	TSS Permit Limit	Nitrogen, Ammonia in mg/l	Nitrogen Ammonia Permit Limit
3/4/2026	10.30	Weekly: 35.0 Monthly: 20.0	24.00	Weekly: 35.0 Monthly: 20.0	0.41	Daily Max: 9.0 Monthly: 2.0
3/12/2026	34.60		126.00		0.29	
3/18/2026	18.40		33.00		1.34	
3/24/2026	36.40		58.00		2.03	
<b>Monthly Average</b>	24.93		60.25		1.02	

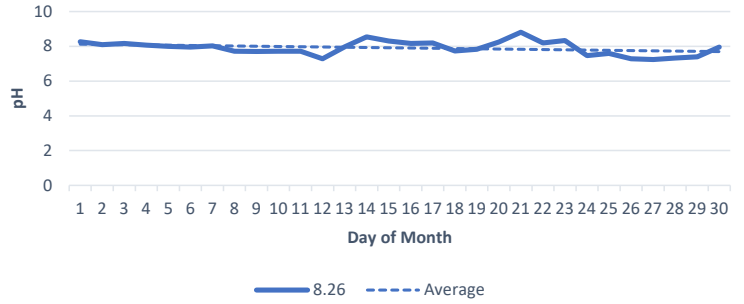


## March 2026 Finished Water

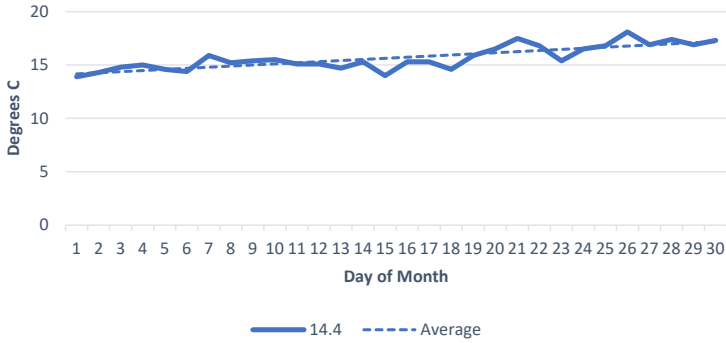
**Turbidity**  
Goal = <0.1



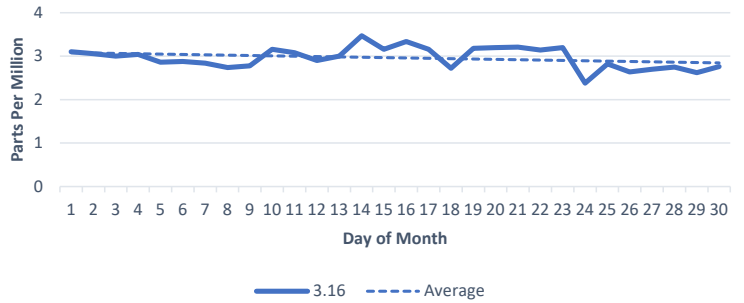
**pH**  
Goal = 8.5



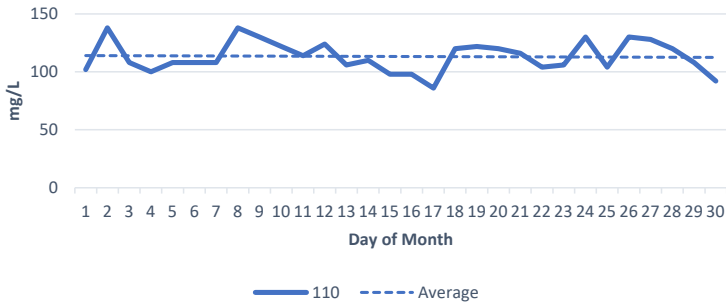
**Temperature**



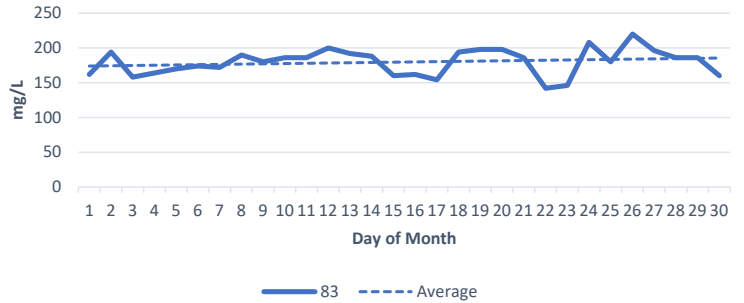
**Finished Water Chlorine**  
Goal = 3.4 ppm



**Alkalinity**  
Goal = 100 mg/L CaCO<sub>3</sub>



**Hardness**  
Goal = <160 mg/L CaCO<sub>3</sub>



**CHISHOLM CREEK UTILITY AUTHORITY**

**MARCH, 2026 DISBURSEMENT SUMMARY**

<b>VENDOR NAME</b>	<b>REFERENCE</b>	<b>AMOUNT</b>	<b>WATER</b>	<b>SEWER</b>
Agri Environmental Services	Sledge Contract	\$ 7,666.56	\$ 3,296.62	\$ 4,369.94
Airgas USA	Lease Renewals, Hazmat Charge	\$ 371.80	\$ 185.90	\$ 185.90
	Gloves, Shop Rags, Paper Towels, Office Chair, Leatherman			
Amazon Business	Multi-Tool, LED bulbs, Batteries	\$ 1,106.95	\$ 553.49	\$ 553.46
American Water Works Assn	Membership Dues	\$ 248.00	\$ 124.00	\$ 124.00
Blue Cross	1 Month of Premiums	\$ 8,743.49	\$ 4,371.74	\$ 4,371.75
BREC Bearing Co Inc	AK034-5/8 IDC, Keystock, R12 2RS IDC-2	\$ 91.25	\$ 45.63	\$ 45.62
Brenntag Southwest	Sodium Hypochlorite	\$ 9,466.25	\$ 9,466.25	\$ -
Burn & McDonnell	Engineering Services thru 2-28-26	\$ 12,801.00	\$ -	\$ 12,801.00
City of Park City	Stormwater Fees	\$ 243.75	\$ 121.87	\$ 121.88
ConnectWise	Bitdefender Adv Threat,	\$ 46.52	\$ 23.26	\$ 23.26
Cox	Phone-Internet	\$ 339.93	\$ 169.96	\$ 169.97
DXP Enterprises	Oda-Log Calibration	\$ 499.78	\$ -	\$ 499.78
Evergy	Utilities	\$ 34,889.66	\$ 13,658.39	\$ 21,231.27
Gilmore & Bell	Legal Services	\$ 700.00	\$ 350.00	\$ 350.00
Hampel Oil	Diesel	\$ 185.41	\$ 92.71	\$ 92.70
Harcros Chemicals	Ferric sulfate, Polymer WWT 3640C	\$ 18,575.00	\$ 14,044.00	\$ 4,531.00
Hawkins, Inc	2- Aqua Ammonia 19%	\$ 1,491.84	\$ 1,491.84	\$ -
Kansas Gas Service	Utilities	\$ 495.07	\$ 247.54	\$ 247.53
Kansas One Call	Locates	\$ 33.25	\$ 16.63	\$ 16.62
Kansas Rural Water Assn	Coference Registration Fees	\$ 1,155.00	\$ 577.50	\$ 577.50
Komline-Sanderson	Upper Belt, K-S Style 4086	\$ 2,110.50	\$ -	\$ 2,110.50
LK Accounting	Bookkeeping	\$ 769.00	\$ 384.50	\$ 384.50
Meridian Analytical Labs	Weekly Testing, Lift Station,	\$ 4,921.00	\$ -	\$ 4,921.00
Mississippi Lime	Quick Lime	\$ 12,380.71	\$ 12,380.71	\$ -
Quick Books	Payroll Direct Deposit Fees	\$ 50.00	\$ 25.00	\$ 25.00
QuikTrip	Fuel	\$ 449.21	\$ 224.61	\$ 224.60
RE Pedrotti Co	IQ Sensornet Probe & Cable-2	\$ 5,210.66	\$ -	\$ 5,210.66
Red Wings Shoes	Boots for Glenn & Dickson	\$ 553.48	\$ 276.74	\$ 276.74
Sargent Drilling	Well Maintenance Contract & Repairs PC Well #12	\$ 21,721.94	\$ 21,721.94	\$ -
Stryv	Bank Fees	\$ 14.75	\$ 7.38	\$ 7.37
T Mobile	Phone Service	\$ 176.00	\$ 88.00	\$ 88.00
Team Electric Supply	12 THHN Wore-1500 Ft, Pull String, 1 HP Speed Controller	\$ 1,020.33	\$ 191.40	\$ 828.93
The Yard	Rotary Files, Tree, cone	\$ 50.00	\$ 25.00	\$ 25.00
United Rentals	Mini Excavator Rental for 1 Week	\$ 803.00	\$ 401.50	\$ 401.50
	Roots 22 URAI Blower, Glass Fiber Filters, Monochlor, Hardness			
USA Bluebook	Manver, Gooch Flter Crucibles, Secondary Digester Blower	\$ 8,375.35	\$ 3,090.49	\$ 5,284.86
	Adobe Subscription, Austin Glenn Anniversary Lunch, Coffee,			
	Half & Half, Paper Towels, Toilet Paper, Tony Certification			
VISA	Renewal, Extension for Email Host, Quick Books Subscription	\$ 2,672.24	\$ 1,336.12	\$ 1,336.12
Waste Connections	Trash	\$ 547.04	\$ 273.52	\$ 273.52
	Needle File Set, Fuel Premix, 60" Handle, Brush, Cover, Roller, 6"			
	digital Frac Caliper, Conduit, Bushings, Elbows, Adapters, 4/10			
	HP Sump Pump, Check Valve, Spray Paint & Primer, 3" Dale			
	Brush, Microfiber Cover, Brass Hose Shutoff/Twist Nozzle,			
Waters Hardware	Programmed Thermostat	\$ 827.76	\$ 174.91	\$ 652.85
Williams Land Payment	Land Payment	\$ 1,126.00	\$ 563.00	\$ 563.00
Payroll, Net Earnings	Two Pay Periods	\$ 18,741.79	\$ 9,016.36	\$ 9,725.43
Payroll Taxes & Benefits	Medicare, FICA, KPERS for 2 payrolls	\$ 11,650.58	\$ 5,604.90	\$ 6,045.68
	<b>Total</b>	<b>\$ 193,321.85</b>	<b>\$ 104,623.41</b>	<b>\$ 88,698.44</b>
Hoover Mower Sales	2026 Scag Turf Tiger Mower	\$ 13,339.00	Charged to CIP	

**CHISHOLM CREEK UTILITY AUTHORITY  
DISBURSEMENT REQUEST (O&M)**

REQUEST DATE: March 24, 2026

VENDOR NAME	REFERENCE	AMOUNT
Agri Environmental Services	Sledge Contract	\$ 7,666.56
Airgas USA	Lease Renewals, Hazmat Charge	\$ 371.80
	Gloves, Shop Rags, Paper Towels, Office Chair, Leatherman Multi-Tool, LED bulbs,	
Amazon Business	Batteries	\$ 1,106.95
American Water Works Assn	Membership Dues	\$ 248.00
Blue Cross	1 Month of Premiums	\$ 8,743.49
BREC Bearing Co Inc	AK034-5/8 IDC, Keystock, R12 2RS IDC-2	\$ 91.25
Brenntag Southwest	Sodium Hypochlorite	\$ 9,466.25
Burn & McDonnell	Engineering Services thru 2-28-26	\$ 12,801.00
City of Park City	Stormwater Fees	\$ 243.75
ConnectWise	Bitdefender Adv Threat,	\$ 46.52
Cox	Phone-Internet	\$ 339.93
DXP Enterprises	Oda-Log Calibration	\$ 499.78
Evergy	Utilities	\$ 34,889.66
Gilmore & Bell	Legal Services	\$ 700.00
Hampel Oil	Diesel	\$ 185.41
Harcros Chemicals	Ferric sulfate, Polymer WWT 3640C	\$ 18,575.00
Hawkins, Inc	2- Aqua Ammonia 19%	\$ 1,491.84
Kansas Gas Service	Utilities	\$ 495.07
Kansas One Call	Locates	\$ 33.25
Kansas Rural Water Assn	Coference Registration Fees	\$ 1,155.00
Komline-Sanderson	Upper Belt, K-S Style 4086	\$ 2,110.50
LK Accounting	Bookkeeping	\$ 769.00
Meridian Analytical Labs	Weekly Testing, Lift Station,	\$ 4,921.00
Mississippi Lime	Quick Lime	\$ 12,380.71
Quick Books	Payroll Direct Deposit Fees	\$ 50.00
QuikTrip	Fuel	\$ 449.21
RE Pedrotti Co	IQ Sensornet Probe & Cable-2	\$ 5,210.66
Red Wings Shoes	Boots for Glenn & Dickson	\$ 553.48
Sargent Drilling	Well Maintenance Contract & Repairs PC Well	\$ 21,721.94
Stryv	Bank Fees	\$ 14.75
T Mobile	Phone Service	\$ 176.00
	12 THHN Wore-1500 Ft, Pull String, 1 HP	
Team Electric Supply	Speed Controller	\$ 1,020.33
The Yard	Rotary Files, Tree, cone	\$ 50.00
United Rentals	Mini Excavator Rental for 1 Week	\$ 803.00
	Roots 22 URAI Blower, Glass Fiber Filters, Monochlor, Hardness Manver, Gooch Filter	
USA Bluebook	Crucibles, Secondary Digester Blower	\$ 8,375.35
	Adobe Subscription, Austin Glenn Anniversary Lunch, Coffee, Half & Half, Paper Towels, Toilet Paper, Tony Certification Renewal, Extension for Email Host, Quick Books	
VISA	Subscription	\$ 2,672.24
Waste Connections	Trash	\$ 547.04
	Needle File Set, Fuel Premix, 60" Handle, Brush, Cover, Roller, 6" digital Frac Caliper, Conduit, Bushings, Elbows, Adapters, 4/10 HP Sump Pump, Check Valve, Spray Paint & Primer, 3" Dale Brush, Microfiber Cover, Brass Hose Shutoff/Twist Nozzle,	
Waters Hardware	Programmed Thermostat	\$ 827.76
Williams Land Payment	Land Payment	\$ 1,126.00
Payroll, Net Earnings	Two Pay Periods	\$ 18,741.79
Payroll Taxes & Benefits	Medicare, FICA, KPERS for 2 payrolls	\$ 11,650.58
	<b>Total</b>	<b>\$ 193,321.85</b>

# Memo

**To:** CCUA Board of Commissioners  
**From:** Anthony Kientz  
**Date:** 3/27/2026  
**Re:** Change order #8

---



Please see the change order letter and associated quotes on the following pages.

The reason for this change order is to give CCUA staff the flexibility to operate the new belt filter press in a more efficient manner. With the current design we would be locked into one speed for the sludge feed rate, and we could easily overload the Belt Press if we let the sludge in the digesters get too thick. In my opinion, we need to have speed controls on the sludge feed since the sludge density is constantly changing. We have sludge feed speed control on our old Belt Press, and it is essential for day to day operations.

Recommendation:

I recommend that the board approve change order #8 for a price not to exceed \$44,980.10, with a possible deduction of \$4,649.35.

Thanks!

To Wilson & Company and Chisholm Creek Utility Authority, CO #8 REV. 1

There have been on-going conversations in regard to adding and adjusting VFDs and controls for pumps P501 and P502 to be controlled from the belt filter press control panel. This was first discussed with RFI #17 which has been attached for reference. A conference call was used to discuss this further with CCUA, Wilson & Co., BRB, Systems Manufacturing and Shelley Electric. After the meeting it was determined that there should be some changes would need to be made in order for the belt filter press panel to have more control over the system. This proposal will add VFDs for the sludge pumps in the Digester and associated analog controls between these VFDs and the PLC in the SBR 3&4 building, as well as additional analog controls between the Belt Filter Press and the UV building

The price to complete this scope of work is \$44,980.10. This proposal will also add an extension of 12 days to the contract schedule. This price includes all labor, materials and equipment necessary to complete this work. There is a possible deduction of \$4,649.35 if the proposal continues with the new VFDs instead of the original motor starters within the original bid. If the deduction is taken, the total will be \$40,330.75. If there are any questions, please feel free to contact me.

Thank you,

Rex Bassett  
Project Manager



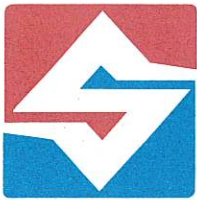
BRB Contractors  
4646 NW Fielding Rd  
PO Box 750940  
Topeka, KS 66675  
O: 785.290.1126  
C: 785.408.0942

**Park City CUA WWTF Improvements  
Wilson & Co.**

Cost Proposal: Belt Filter Press VFDs & Controls REV. 1  
Date: February 20, 2026

Class of Work	QTY.	Unit	Unit Labor	Labor	Total Labor	Unit Material	Extended Material	Equipment Cost	Sub Contract
Shelley Electric Scope	1.00	LS			0.00				34149.00
Systems Manufacturing Scope	1.00	LS			0.00				6742.00
		LS			0.00				
		DAY(S)			0.00				
		DAY(S)			0.00				
		DAY(S)			0.00				
		EA			0.00				
		EA			0.00				
<b>Sub Totals:</b>					<b>\$0.00</b>		<b>\$0.00</b>	<b>\$0.00</b>	<b>\$40,891.00</b>

<b>Material Sub-Total</b>		\$0.00
<b>Labor Sub-Total</b>		\$0.00
<b>Subcontractor-Total</b>		\$40,891.00
<b>Equipment Sub-Total</b>		\$0.00
<b>Sub-Total</b>		\$40,891.00
<b>Sub-Total Without Sub</b>		\$0.00
<b>Contractor's Fee</b>	5.00%	\$2,044.55
<b>Sub-Contractors Fee</b>	5.00%	\$2,044.55
<b>Sub-Total</b>		\$44,980.10
<b>Insurance and Bond</b>		
<b>Total</b>		\$44,980.10



# Shelley Electric, Inc.

3619 West 29th St. South  
P.O. Box 12124  
Wichita, KS 67277  
Telephone: (316) 945-8311  
Fax: (316) 945-2604

## Change Order PRICING SUMMARY

### Description: Belt Filter Press VFDs & Controls

I	MATERIAL				
	A. Per Extend Sheet			\$	9,633.11
	B. Quoted Items			\$	10,683.02
	C. Subcontractor			\$	-
	TOTAL MATERIAL COSTS				\$ 20,316.13
II	LABOR COSTS	HOURS	RATE		
	A. Journeyman	104.98	\$ 75.00	\$	7,873.50
	Journeyman O.T.	0	\$ 83.00	\$	-
	Foreman (16% of JW)	16.80	\$ 86.25	\$	1,448.72
	Foreman O.T.	0	\$ 96.50	\$	-
	TOTAL LABOR COSTS				\$ 9,322.22
	TOTAL DAYS ADDED TO THE PROJECT:	15			
III	EQUIPMENT COSTS				
	A. Small Tools (4.5%) of Labor Cost			\$	419.50
	B. Rental Equipment				
	C. Transportation Costs (6%) of materials				
	D. Storage Costs (3.5% ) of materials				
	TOTAL EQUIPMENT COSTS				\$ 419.50
IV	JOB COSTS EXPENSES				
	A. Offsite storage & Pre-fab				
	B. Bonds, Security, Project Insurance			\$	296.38
	C. Permits, Fees			\$	-
	D. Safety Equipment (2%) of Labor Costs			\$	186.44
	E. Freight (3%) of materials			\$	-
	F. Mobilize/Demobilize				
	G. Document Controls			\$	-
	H. Warranty			\$	148.19
	I. Technology			\$	296.38
	J. Per Diem (\$125 per day)			\$	-
					\$ 927.40
V	TOTAL PRIME COST				\$ 30,985.26
VI	OVERHEAD @ 7%				\$ 2,168.97
VII	TOTAL NET COSTS				\$ 33,154.23
VIII	SUBTOTAL			\$	33,154.23
IX	PROFIT @ 3%			\$	994.63
X	SALES TAX PERCENTAGE 7.50%			\$	-
XI	TOTAL AND SELL PRICE FOR DIRECT COSTS			\$	34,149.00
	PREPARATION FEE	HOURS	RATE	\$	-
		1	\$ 125.00		
<b>TOTAL CHANGE TO CONTRACT</b>				\$	<b>34,149.00</b>
<b>TOTAL DAYS ADDED TO THE CONTRACT</b>					<b>15</b>

Belt Filter Press VFDs & Controls

2/12/2026

Job Name: Chisholm Creek WWTF Improvements

Job Number: 553

Extension Name: BFP VFDs & Controls

Material Filter: <None>

Report: Matl Price & NECA 2

**[ItemsAndByproducts] Summary**

Item #	Item Name	Quantity	Matl Price	Ext Matl Price	Labor **	Ext Labor ** CCode	% Ext Price	% Ext Hours
	Branch Rough			<u>\$883.97</u>		<u>17.26</u>	<u>9.18%</u>	<u>16.44%</u>
	Branch Wire			<u>\$545.41</u>		<u>0.59</u>	<u>5.66%</u>	<u>0.56%</u>
	Drill, Cutting/Core			<u>\$400.00</u>		<u>14.00</u>	<u>4.15%</u>	<u>13.34%</u>
	Feeder Rough			<u>\$7,802.84</u>		<u>68.90</u>	<u>81.00%</u>	<u>65.63%</u>
	Lugs/Termination/Ground			<u>\$0.88</u>		<u>4.24</u>	<u>0.01%</u>	<u>4.04%</u>

Job Name: Chisholm Creek WWTF Improvements

Job Number: 553

Material Filter: <None>

Extension Name: BFP VFDs & Controls

[ItemsAndByproducts]

Report: Matl Price & NECA 2

Item #	Item Name	Quantity	Matl Price	Ext Matl Price	Labor **	Ext Labor ** CCode	% Ext Price	% Ext Hours
Combined->Combined->Combined->Combined->Combined				<b>\$9,633.11</b>		<b>104.98</b>	<b>100.00%</b>	<b>100.00%</b>
Branch Rough				<b>\$883.97</b>		<b>17.26</b>	<b>9.18%</b>	<b>16.44%</b>
4151	3/4 ALUM CONDUIT	25.00	\$281.02 C	\$70.26	6.80 C	1.70 cb	0.73%	1.62%
4152	1 ALUM CONDUIT	105.00	\$406.58 C	\$426.90	7.50 C	7.88 cb	4.43%	7.50%
4340	1 AL LB BODY	2.00	\$38.23 E	\$76.46	1.12 E	2.24 cb	0.79%	2.13%
4388	1 AL T BODY	2.00	\$68.64 E	\$137.28	1.43 E	2.86 cb	1.43%	2.72%
4574	1 AL FLAT COVER	4.00	\$11.59 E	\$46.37	0.00 X	0.00 cb	0.48%	0.00%
4583	1 AL GASKET	4.00	\$9.68 E	\$38.74	0.00 X	0.00 cb	0.40%	0.00%
4591	3/4 LOCKNUT	5.00	\$116.65 C	\$5.83	0.14 E	0.70 cb	0.06%	0.67%
4661	3/4 BUSH PLASTIC	2.00	\$35.20 C	\$0.70	0.14 E	0.28 cb	0.01%	0.27%
4662	1 BUSH PLASTIC	6.00	\$62.70 C	\$3.76	0.17 E	1.02 cb	0.04%	0.97%
5309	3/4 GRC CHNL STRAP	2.50	\$448.96 C	\$11.22	3.75 C	0.09 cb	0.12%	0.09%
5310	1 GRC CHNL STRAP	13.00	\$511.10 C	\$66.44	3.75 C	0.49 cb	0.69%	0.46%
Branch Wire				<b>\$545.41</b>		<b>0.59</b>	<b>5.66%</b>	<b>0.56%</b>
11	12 THHN CU STRANDED	78.75	\$238.13 M	\$18.75	7.50 M	0.59 wb	0.19%	0.56%
1024	2PR #16 OA SHLD 600VOLT TC CABLE	1,170.35	\$450.00 M	\$526.66	0.00 M	0.00 wb	5.47%	0.00%
Drill, Cutting/Core				<b>\$400.00</b>		<b>14.00</b>	<b>4.15%</b>	<b>13.34%</b>
27559	2 1/2X8 CORE-DRILL CONCRETE W/LAYOUT	8.00	\$50.00 E	\$400.00	1.75 E	14.00 md	4.15%	13.34%
Feeder Rough				<b>\$7,802.84</b>		<b>68.90</b>	<b>81.00%</b>	<b>65.63%</b>
4836	2 ALUM GND MEYERS HUB	4.00	\$1,989.78 C	\$79.59	1.06 E	4.24 cf	0.83%	4.04%
6793	2 GRC/PVC COATED	16.00	\$2,216.88 C	\$354.70	22.50 C	3.60 cf	3.68%	3.43%
6821	2 GRC/PVC COUP	4.00	\$3,118.85 C	\$124.75	0.87 E	3.48 cf	1.30%	3.31%
6848	2 GRC/PVC 90 ELBOW	5.00	\$10,186.54 C	\$509.33	1.50 E	7.50 cf	5.29%	7.14%
6876	2 GRC/PVC 45D ELBOW	2.00	\$11,362.40 C	\$227.25	1.50 E	3.00 cf	2.36%	2.86%
8159	2 PVC 80 UG	385.18	\$586.91 C	\$2,260.64	10.00 C	38.52 cf	23.47%	36.69%
8453	2 PVC BELL END	12.00	\$1,752.24 C	\$210.27	0.28 E	3.36 cf	2.18%	3.20%
8500	2 PVC FEMALE ADPT	10.00	\$433.15 C	\$43.32	0.37 E	3.70 cf	0.45%	3.52%
25702	16"X12"X6" NEMA 4X SS CONCEPT BOX	3.00	\$1,331.00 E	\$3,993.00	0.50 E	1.50 cf	41.45%	1.43%
Lugs/Termination/Ground				<b>\$0.88</b>		<b>4.24</b>	<b>0.01%</b>	<b>4.04%</b>
9565	16 GA TERMINATION	24.00	\$0.00 X	\$0.00	0.15 E	3.60 sl	0.00%	3.43%
9723	WIRE ID MACHINE CODED SLEEVE	8.00	\$0.11 E	\$0.88	0.08 E	0.64 sl	0.01%	0.61%
				<b>\$9,633.11</b>		<b>104.98</b>	<b>100.00%</b>	<b>100.00%</b>

previously about canceling these items as you had informed us of a production delay on these starters. I believe you had already sent a message to the plant asking if we could cancel or questioned whether we were too late in this process to cancel these items. Please note that we are not canceling any of the drives/soft starters on the BOM but would only be interested in canceling the FVNR Combo Starters. Thanks,  
Randy



**Randy Wertenberger, Assoc. DBIA**  
**Estimator/Project Manager**  
Shelley Electric, Inc. | 3619 W. 29<sup>th</sup> South | Wichita, KS 67217  
Office: (316) 945-8311  
Cell : (316) 304-9264  
[randy@shelleyelectric.com](mailto:randy@shelleyelectric.com)

**From:** Grimm, Christina M <[ChristinaMGrimm@eaton.com](mailto:ChristinaMGrimm@eaton.com)>  
**Sent:** Tuesday, February 10, 2026 11:38 AM  
**To:** Randy Wertenberger <[Randy@shelleyelectric.com](mailto:Randy@shelleyelectric.com)>; Broadrick, Chris W <[ChrisWBroadrick@eaton.com](mailto:ChrisWBroadrick@eaton.com)>; [mgardner@wesco.com](mailto:mgardner@wesco.com)  
**Cc:** Matt Fischer <[matt@shelleyelectric.com](mailto:matt@shelleyelectric.com)>; Lewis, Ryan S <[RyanSLewis@Eaton.com](mailto:RyanSLewis@Eaton.com)>  
**Subject:** RE: [EXTERNAL] Pricing request for CCUA - LWH0039288

*Hey Randy! Sorry for the delay, the plant finally got back to Ryan.*

*I'm assuming you are wanting to cancel the drives on line 031 and replace it with these?? Here is your cost for the new drives, I will let Mike tell you what the credit will be for the old drives on line 031.*

**NEW 5 HP VFDs**

Qty. 2	AE61A Sludge Pump P501/P502	Enclosed Control	ECN2409C0D-A16E9P1P68S3T9	TOTAL
COST \$10,683.02 (5341.51 each)				

**Christina Grimm, PMP**

Project Leader and Central DPM Lead  
Project Management Professional  
Electrical Division, Eaton  
62 Soccer Park RD | Fenton, MO 63026  
Mobile: +1 314-208-9047  
[Christinamgrimm@eaton.com](mailto:Christinamgrimm@eaton.com)  
TECHNICAL HELP LINE # 877-386-2273



For Quotation Assistance and Questions, email [HeartlandEastQuotes@eaton.com](mailto:HeartlandEastQuotes@eaton.com).

## Randy Wertenberger

---

**From:** Gardner, Mike <MGardner@wescodist.com>  
**Sent:** Wednesday, February 11, 2026 9:31 AM  
**To:** Randy Wertenberger  
**Subject:** Wesco - City Of Wichita WWTP - LWH0039288 - Drives credit info

Randy good morning,

Enclosed control  
Sludge pumps P501,P502  
ECN2409C0C-A16E9P1P68S3T9

Total \$7152.94 – cancelation fee - \$2503.59 – Credit would be \$4649.35

Thank you



The above transaction shall be subject to Wesco Terms of Sale published at [www.wesco.com/termsofsale](http://www.wesco.com/termsofsale)

**Mike Gardner**

Senior Account Representative  
Note new number-  
Direct 316-669-8262 | Cell 316-312-6248  
[mgardner@wescodist.com](mailto:mgardner@wescodist.com)  
1257 N. Mosley St, Wichita KS 67214

Please copy Kim Cook on all emails [kim.cook@wescodist.com](mailto:kim.cook@wescodist.com)

February 12, 2026

Rex Bassett  
BRB Contractors  
4646 NW Fielding Rd  
PO Box 750940  
Topeka, KS 66675

Re: CCUA WTF Improvements  
Instrumentation and Controls Change Order

Rex,

We are requesting a change order for the items discussed at our meeting. These changes will allow for the owner to adjust the speed of the VFDs for pumps P501 and P502 from the Belt Filter Press Control Panels. It will also allow selection of which Belt Filter Press Control Panel controls the Polymer Skids, selectable at the Belt Filter Press Interface Panel. Let me know if you have any questions.

#### **UV Panel Modifications**

- New analog output card
- Four analog surge arrestors
- Analog inputs assigned to P501 and P502 Speed Reference (Control)
- Analog outputs assigned to P501 and P502 Speed Feedback

#### **SBR 3/4 Control Panel Modifications**

- Four analog surge arrestors
- Analog outputs assigned to P501 and P502 Speed Reference (Control)
- Analog inputs assigned to P501 and P502 Speed Feedback

#### **Belt Filter Press Interface Panel Modifications**

- New selector switch to select which BFP controls the Polymer Skids
- Additional relays to switch the P501 and P502 analog signals and to switch the Polymer Skid Call to Run/Running/Speed Control/Speed Feedback signals

**Price for Above: \$6,742.00**

Sincerely,

*Matt Stallbaumer*

[matt@systemskc.com](mailto:matt@systemskc.com)  
913-485-3307

TO: BRB Contractors, Inc. PROJECT: CCUA WWTP  
ATTN: Mr. Rex Bassett RFI #: 006  
EMAIL: rexbassett@brbcontractors.com REF: E-702

---

Problem/Question: Belt Filter Press Controls

- It is unclear from the block diagram on E-702 whether both Belt Filter Presses will be capable of running at the same time.
- It is also unclear whether process flow will be sent from the lime reactors and the new digester building at the same time.
- Does the Belt Filter Press Interface Panel need to have the polymer feed pumps tied into it so that either belt press can call for the same polymer pump to run?
- Does the Belt Filter Press Interface Panel need to be able to switch the speed control of the sludge pumps between the Belt Press Control Panels as well as the run command?
- Are electrically controlled isolation valves required on the polymer feed lines in the event only one belt press is running?

Standard Routing Requested      Signed Randy Wertenberger  
 Urgent Routing Requested      Date 12 February, 2026

---

Answer:

Refer to Wilson & Company responses in [blue](#).

- It is unclear from the block diagram on E-702 whether both Belt Filter Presses will be capable of running at the same time.  
[The two belt presses will not operate simultaneously; only one unit will run at a time. The belt filter press interface panel will be used to select which belt filter press is in operation.](#)
- It is also unclear whether process flow will be sent from the lime reactors and the new digester building at the same time.  
[Flow will either be sent from the lime sludge thickeners or the primary digestors but not at the same time.](#)

- Does the Belt Filter Press Interface Panel need to have the polymer feed pumps tied into it so that either belt press can call for the same polymer pump to run?

The belt filter press interface panel is not intended to have the polymer pumps wired into it. New wiring shall be provided directly from the polymer pumps to the new belt filter press control panel. The original design intent was for the signals and control wiring from the new belt filter press to be connected in parallel with the existing belt filter press so that either press could operate the polymer pumps. The belt filter press interface panel will be used to select which belt filter press is in operation.

- Does the Belt Filter Press Interface Panel need to be able to switch the speed control of the sludge pumps between the Belt Press Control Panels as well as the run command?

The pump speed control is manually adjusted. Based on the control panel submittal, the belt filter press interface panel is configured to initiate pump operation. The interface panel will send a signal to the UV Building PLC panel, which will then command the pumps to run. Additional analog signals will need to be wired to allow for remote speed control operation. Also, the sludge pump motor starter will be changed from an across the line starter to a VFD.

- Are electrically controlled isolation valves required on the polymer feed lines in the event only one belt press is running?

No, they are not required. However, we need to add two 1-1/2" manual ball valves on either side of the proposed tee fitting for manual isolation.

The previously issued electrical IFC drawings will be revised to incorporate changes resulting from this RFI response and the project coordination meeting held on January 26.

Signed: \_\_\_\_\_

Date: \_\_\_\_\_

For Shelley Electric Use Only			
Schedule Impact	<input checked="" type="checkbox"/>	Yes	<input type="checkbox"/> No
Cost Impact	<input checked="" type="checkbox"/>	Yes	<input type="checkbox"/> No

# Memo

**To: CCUA Board of Commissioners**  
**From: Anthony Kientz**  
**Date: 4/16/2026**  
**Re: C&B Proposals for Pumps**

---



During the last meeting this item was on the agenda, but I was still waiting for prices on brand new replacements. Those prices came in the day after the meeting, and they are listed below along with the rebuild prices and a summary of these Purchase Orders.

We recently sent two of our submersible pumps to C&B for repairs. These pumps are pulled annually, and we inspect them for damage, if we find something that looks wrong, we send them to a rebuild shop. These two pumps are the same model, but they have different horsepower ratings, so the costs should be pretty close. C&B has been very good with every rebuild we have received from them in the past. The prices they quoted us are as follows:

PO# 7213 - Supernatant Pump Model D5431MT:

- Rebuild – \$11,484.29
- Replace – 18,208.67

PO# 7214 - Blowdown Sludge Pump Model D5431MT:

- Rebuild – \$11,643.57
- Replace – \$18,478.67

Recommendation: I recommend that we proceed with the rebuilding option since C&B has always rebuilt our pumps to equal or better than factory original. In the last 10 years C&B has rebuilt 5 pumps of different make and model and all of them are still in service rotation.

Proposed motion:

*I motion to approve purchase orders 7213 and 7214 to C&B Equipment for the rebuild of two Model D5431MT pumps, for a total price not to exceed \$23,127.86.*

**Chisholm Creek  
Utility Authority**

5551 N Broadway  
Park City, KS 67219  
Phone: 316-838-4748, Fax: 316-838-4640

**PURCHASE  
ORDER**

The following P.O. number must appear on all related correspondence, shipping papers, and invoices:

**P.O. NUMBER: 7213**

To:

**C&B Equipment**  
3717 N. Ridgewood St.  
Wichita, KS 67220

**Ship To:**  
**Chisholm Creek Utility Authority**  
WTP/WWTP  
5551 North Broadway  
Park City, KS 67219  
Phone: 316-838-4748  
Fax: 316-838-4640

P.O. DATE	REQUISITIONER	SHIPPED VIA	F.O.B. POINT	TERMS
4/23/2026	Anthony Kientz	Customer Pickup	C&B Equipment	Net-15

QTY	UNIT	DESCRIPTION	UNIT PRICE	TOTAL
1	Each	Fairbanks D5431MT Rebuild, See quote for details Wastewater Supernatant Pump	\$11,484.29	\$11,484.29
			\$0.00	\$0.00
			\$0.00	\$0.00
			\$0.00	\$0.00
			\$0.00	\$0.00
			\$0.00	\$0.00

SALES TAX ID: KS9WUFMSRD

Subtotal	\$11,484.29
Sales Tax	Exempt
Shipping & Handling	
Other	
<b>TOTAL</b>	<b>\$11,484.29</b>

1. Please send two copies of your invoice.
2. All water treatment chemical MUST be NSF and/or AWWA certified for this purpose.
3. Enter this order in accordance with the prices, terms, delivery method, and specifications listed above.
4. Please notify us immediately if you are unable to ship as specified.

Expense Account Breakdown	Amount
6420 - WWTP Repair Cost	\$11,484.29

4/23/2026

---

Authorized by action of the board Date



3717 N. Ridgewood St, Wichita, KS 67220

Qte #3-2-26 so Fairbanks-Morse Pump Repair SVC #17227

<p>C &amp; B Equipment, Inc.          Phone: 800-362-3222 or 316-262-5156          Fax: 316-262-5040</p> <p>By: Shelly Olmstead          Date: 03/27/26</p> <p>Reference: MODEL D5431MT          Serial #10526424</p> <p>Terms: Net 15 Days with Approved Credit</p>	<p>TO: CCUA          5551 N. Broadway          Park City, KS. 67219</p> <p>Phone: 616-8760          Email: <a href="mailto:tony@ccua.kscoxmail.com">tony@ccua.kscoxmail.com</a></p> <p>Attn: Tony</p> <p>FOB: Factory          Leadtime: Apprx 3-4 Weeks</p> <p>Orders paid by credit card are subject to a 3.5% convenience fee</p>
--	--

ITEM	QTY.	DESCRIPTION	Selling Price	Extended
	1	<p>Disassembled &amp; inspected. Recommend bead blast and clean all reusable parts. Clean and bake motor windings, dynamic balance rotor, manufacture new impeller wear ring and case ring, install new bearings, mech seals, moisture sensor, resistor, terminal board, o-rings, gaskets and dowell pins. Reassemble with new cord/cap assembly and profile gasket. Prime &amp; Paint.</p> <p>FAIRBANKS D5431MT REBUILD  <i>You will be notified should there be any cost variances.</i>  <b>Note:</b> A \$670 teardown &amp; inspection fee will still be required should you choose not to proceed.</p> <p>New Pump Price with Teardown Fee = \$18,208.67 (18 wks)            (freight not included)</p> <p><i>Pricing subject to change without notice due to ongoing tariffs.</i>  <b>Thank you for giving C&amp;B Equipment the opportunity to do business with you.</b></p>		\$ 11,484.29
<b>TOTAL</b>				<b>\$ 11,484.29</b>

CONDITIONS: All conditions and sales are FOB point of shipment unless otherwise stated. Our responsibility ceases upon delivery of material to carrier. The prices and terms stated in the above quotation are not subject to verbal changes or agreements unless approved in writing by the Seller. All quotations are contingent upon the availability of materials, and subject to other causes beyond our control. Prices are based upon costs and conditions existing on the date of the quotation, and are subject to change by the Seller before final acceptance. We use our best efforts in every case to ship within the time promised, but do not guarantee to do so.

SIGNED BY: **Shelly Olmstead** Email: [solmstead@cbeuptime.com](mailto:solmstead@cbeuptime.com)

**Chisholm Creek  
Utility Authority**

5551 N Broadway  
Park City, KS 67219  
Phone: 316-838-4748, Fax: 316-838-4640

**PURCHASE  
ORDER**

The following P.O. number must appear on all related correspondence, shipping papers, and invoices:

**P.O. NUMBER: 7214**

To:

**C&B Equipment**  
3717 N. Ridgewood St.  
Wichita, KS 67220

**Ship To:**  
**Chisholm Creek Utility Authority**  
WTP/WWTP  
5551 North Broadway  
Park City, KS 67219  
Phone: 316-838-4748  
Fax: 316-838-4640

P.O. DATE	REQUISITIONER	SHIPPED VIA	F.O.B. POINT	TERMS
4/23/2026	Anthony Kientz	Customer Pickup	C&B Equipment	Net-15

QTY	UNIT	DESCRIPTION	UNIT PRICE	TOTAL
1	Each	Fairbanks D5431MT Rebuild, See quote for details Drinking Water Blowdown Pump	\$11,643.57	\$11,643.57
			\$0.00	\$0.00
			\$0.00	\$0.00
			\$0.00	\$0.00
			\$0.00	\$0.00
			\$0.00	\$0.00

SALES TAX ID: KS9WUFMSRD

Subtotal	\$11,643.57
Sales Tax	Exempt
Shipping & Handling	
Other	
<b>TOTAL</b>	<b>\$11,643.57</b>

1. Please send two copies of your invoice.
2. All water treatment chemical MUST be NSF and/or AWWA certified for this purpose.
3. Enter this order in accordance with the prices, terms, delivery method, and specifications listed above.
4. Please notify us immediately if you are unable to ship as specified.

Expense Account Breakdown	Amount
5420 WTP - Repair Cost	\$11,643.57

4/23/2026

---

Authorized by action of the board Date



3717 N. Ridgewood St, Wichita, KS 67220

Qte #3-2-26 so Fairbanks-Morse Pump Repair SVC #17228

<p>C &amp; B Equipment, Inc.          Phone: 800-362-3222 or 316-262-5156          Fax: 316-262-5040</p> <p>By: Shelly Olmstead          Date: 03/27/26</p> <p>Reference: MODEL D5431MT          Serial #2430804-0</p> <p>Terms: Net 15 Days with Approved Credit</p>	<p>TO: CCUA          5551 N. Broadway          Park City, KS. 67219</p> <p>Phone: 616-8760          Email: <a href="mailto:tony@ccua.kscoxmail.com">tony@ccua.kscoxmail.com</a></p> <p>Attn: Tony</p> <p>FOB: Factory          Leadtime: Apprx 3-4 Weeks</p> <p>Orders paid by credit card are subject to a 3.5% convenience fee</p>
---	--

ITEM	QTY.	DESCRIPTION	Selling Price	Extended
	1	<p>Disassembled &amp; inspected. Recommend bead blast and clean all reusable parts. Clean and bake motor windings, dynamic balance rotor, manufacture new impeller wear ring and case ring, install new bearings, mech seals, moisture sensor, resistor, terminal board, o-rings, gaskets and dowell pins. Reassemble with new cord/cap assembly and profile gasket. Prime &amp; Paint.</p> <p>FAIRBANKS D5431MT REBUILD  <i>You will be notified should there be any cost variances.</i>  <b>Note:</b> A \$940 teardown &amp; inspection fee will still be required should you choose not to proceed.</p> <p>New Pump Price with Teardown Fee = \$18,478.67 (18 wks)            (freight not included)</p> <p><i>Pricing subject to change without notice due to ongoing tariffs.</i>  <b>Thank you for giving C&amp;B Equipment the opportunity to do business with you.</b></p>		\$ 11,643.57
<b>TOTAL</b>				<b>\$ 11,643.57</b>

CONDITIONS: All conditions and sales are FOB point of shipment unless otherwise stated. Our responsibility ceases upon delivery of material to carrier. The prices and terms stated in the above quotation are not subject to verbal changes or agreements unless approved in writing by the Seller. All quotations are contingent upon the availability of materials, and subject to other causes beyond our control. Prices are based upon costs and conditions existing on the date of the quotation, and are subject to change by the Seller before final acceptance. We use our best efforts in every case to ship within the time promised, but do not guarantee to do so.

SIGNED BY: **Shelly Olmstead** Email: [solmstead@cbeuptime.com](mailto:solmstead@cbeuptime.com)

# Memo

**To: CCUA Board of Commissioners**  
**From: Anthony Kientz**  
**Date: 4/16/2026**  
**Re: Budget Items**

---



Please see the following page for the first draft of the CCUA 2027 budget. I will be giving a presentation at the meeting next week going over the changes I have made in the 2027 budget.

I don't have the debt service numbers for the 2027 budget yet. They are normally ready in early May. I will work with our financial advisor and BNY to ensure accuracy.

Here are some of the items I would like to bring to the attention of the board.

1. #5250/6250 – DW and WW Insurance
  - a. The board asked me to gather updated pricing and proposals before the end of the year. This will be added to the 2026 RFP list.
  - b. Insurance costs will increase once we take ownership of the expanded Wastewater plant at the end of 2027.
2. #6500 – WW Testing
  - a. By 2027 we may want to pull back to testing every other week at the lift stations. This could save over \$30,000.
3. #5450/6450 – DW and WW Sludge Hauling
  - a. The current sludge hauling contract will be expiring on 1/1/2027. This will be added to the 2026 RFP list.
4. #5420 – DW Repair Costs
  - a. The current Groundwater Well Maintenance Contract will be expiring on 1/1/2027. This will be added to the 2026 RFP list.

If you have any questions about specific items in the 2027 budget, please feel free to contact me.

Thanks!

# 2027 Proposed CUA BUDGET

	Operating Income			Monthly Operating Income		
	Drinking Water	Total	Wastewater	Drinking Water	Total	Wastewater
4210 O&M Revenue-Bel Aire	\$644,021	\$1,284,005	\$639,983 4220	\$53,668.45	\$107,000.40	\$53,331.95
4230 O&M Rev-Park City	\$644,021	\$1,284,005	\$639,983 4240	\$53,668.45	\$107,000.40	\$53,331.95
4280 Reserves	\$12,000	\$24,000	\$12,000 4290	\$1,000.00	\$2,000.00	\$1,000.00
4310 Other Income	\$50	\$100	\$50 4320	\$4.17	\$8.34	\$4.17
4330 - CIP/Equipment Replacement	\$60,000	\$120,000	\$60,000 4340	\$5,000.00	\$10,000.00	\$5,000.00
7250 Interest Income	\$35	\$70	\$35 7260	\$2.92	\$5.84	\$2.92
<b>Total Revenues</b>	<b>\$1,360,128</b>	<b>\$2,712,180</b>	<b>\$1,352,052</b>	<b>\$113,344</b>	<b>\$226,015</b>	<b>\$112,671</b>
Bel Aire with Reserve & CIP	<b>\$680,021.38</b>	<b>\$1,392,005</b>	<b>\$711,983</b>	<b>\$56,668.45</b>	<b>\$116,000.40</b>	<b>\$59,331.95</b>
Park City with Reserve & CIP	<b>\$680,021.38</b>	<b>\$1,392,005</b>	<b>\$711,983</b>	<b>\$56,668.45</b>	<b>\$116,000.40</b>	<b>\$59,331.95</b>
		<b>\$2,784,010</b>			<b>\$232,001</b>	

	Operating Expenses			Operating Expenses		
	Drinking Water	Total	Wastewater	Drinking Water	Total	Wastewater
5100 Attorney Fees	\$5,000	\$10,000	\$5,000 6100	\$416.67	\$833.33	\$416.67
5110 Auditors	\$10,700	\$21,400	\$10,700 6110	\$891.67	\$1,783.33	\$891.67
5115 Engineering Fees	\$20,000	\$65,000	\$45,000 6115	\$1,666.67	\$5,416.67	\$3,750.00
5140 Bank Fees	\$6,800	\$13,600	\$6,800 6140	\$566.67	\$1,133.34	\$566.67
5150 Bookkeeping & Secretarial	\$6,500	\$13,000	\$6,500 6150	\$541.67	\$1,083.33	\$541.67
5170 Chemicals	\$309,281	\$409,281	\$100,000 6170	\$25,773.45	\$34,106.78	\$8,333.33
5180 Computer Expense	\$4,000	\$8,000	\$4,000 6180	\$333.33	\$666.67	\$333.33
5190 Copier	\$1,000	\$2,000	\$1,000 6190	\$83.33	\$166.66	\$83.33
5200 Dues/Subs	\$3,000	\$6,000	\$3,000 6200	\$250.00	\$500.00	\$250.00
5220 Equipment Replacement	\$60,000	\$150,000	\$90,000 6220	\$5,000.00	\$12,500.00	\$7,500.00
5230 Fuel	\$3,500	\$7,000	\$3,500 6230	\$291.67	\$583.33	\$291.67
5240 Gilmore/Bell Fees	\$4,000	\$10,000	\$6,000 6240	\$333.33	\$833.33	\$500.00
5250 Insurance	\$26,000	\$52,000	\$26,000 6250	\$2,166.67	\$4,333.33	\$2,166.67
5260 Kansas Gas Service	\$4,000	\$8,000	\$4,000 6260	\$333.33	\$666.67	\$333.33
5270 Kansas One Call	\$372	\$744	\$372 6270	\$31.00	\$62.00	\$31.00
5300 Land Pmt Plant Prop	\$6,756	\$13,512	\$6,756 6300	\$563.00	\$1,126.00	\$563.00
5330 Office Supp/Postage	\$800	\$1,600	\$800 6330	\$66.67	\$133.33	\$66.67
5340 Permit Fees (KDHE)	\$185	\$985	\$800 6340	\$15.42	\$82.09	\$66.67
5360 Phone	\$3,500	\$7,000	\$3,500 6360	\$291.67	\$583.33	\$291.67
5370 Plant Supplies, Repair	\$60,000	\$142,000	\$82,000 6370	\$5,000.00	\$11,833.33	\$6,833.33
5420 Repair Costs	\$140,000	\$212,000	\$72,000 6420	\$11,666.67	\$17,666.67	\$6,000.00
5440 Salaries/Benefits	\$330,150	\$670,282	\$340,132 6440	\$27,512.53	\$55,856.85	\$28,344.32
5445 - Employee Appreciation	\$600	\$1,200	\$600 6445	\$50.00	\$100.00	\$50.00
5450 Sludge Hauling	\$40,000	\$92,000	\$52,000 6450	\$3,333.32	\$7,666.65	\$4,333.33
5460 SCADA Systems	\$15,000	\$17,500	\$2,500 6460	\$1,250.00	\$1,458.33	\$208.33
5500 Testing	\$2,200	\$92,200	\$90,000 6500	\$183.33	\$7,683.33	\$7,500.00
5510 Training	\$2,500	\$5,000	\$2,500 6510	\$208.33	\$416.66	\$208.33
5520 Trash	\$2,000	\$4,000	\$2,000 6520	\$166.67	\$333.33	\$166.67
5530 Uniforms	\$1,500	\$3,000	\$1,500 6530	\$125.00	\$250.00	\$125.00
5550 Westar	\$201,698	\$501,698	\$300,000 6550	\$16,808.18	\$41,808.18	\$25,000.00
5620 Contingency 5%	\$14,000	\$25,000	\$11,000 6620	\$1,166.67	\$2,083.33	\$916.67
5630 Special Assessments	\$3,000	\$3,007	\$7 6630	\$250.00	\$250.58	\$0.58
<b>Total Expenses</b>	<b>\$1,288,043</b>	<b>\$2,568,010</b>	<b>\$1,279,967</b>	<b>\$107,336.90</b>	<b>\$214,000.80</b>	<b>\$106,663.90</b>

5020 Interest Expense	\$0	\$0	\$0 6020	\$0.00	\$0.00	\$0.00
7115 Bond Pmt Revenue - BA	\$0	\$0	\$0 7125	\$0.00	\$0.00	\$0.00
7135 Bond Pmt Revenue - PC	\$0	\$0	\$0 7145	\$0.00	\$0.00	\$0.00
<b>Total City Debt Service Payments</b>		<b>\$0</b>				

7041 Bond Interest Income	\$0
7042 Bond Other Income	\$0
8500 Bond Proceeds Received	\$0
8102 Bond Payments - Series 2004	Retired
8103 Bond Payments - Series 2007	\$0
8104 Bond Payments - Series 2012	\$0
8106 Bond Payments - Series 2015	\$0
8108 - Bond Payments - Series 2017	\$0
<b>Total Bond Payments</b>	<b>\$0</b>

# Memo

**To: CCUA Board of Commissioners**  
**From: Anthony Kientz**  
**Date: 4/17/2026**  
**Re: On-Call Engineer**

---



With all the upcoming projects that I would like to get accomplished I think it is time CCUA acquired an On-Call Engineer.

Our contract with Wilson & Co. clearly states that design services for other improvements are not included in this contract. And our contract with Burns & McDonnell has a fairly narrow scope regarding the cost-of-service agreement.

In 2013 we had MKEC as our "On-Call" Engineering firm. The services provided were billed monthly on a time and materials basis. That contract had the following scope:

1. Work closely with CCUA staff to develop recommendations concerning treatment plant operational improvements to optimize treatment, energy efficiency, longevity of facilities and preparation for changing regulations.
2. Assist with coordination of services to member cities.
3. Assist with dealing with regulators
4. Coordinate with engineering firms currently under contract for specific projects.
5. Attend up to four board meetings per year to make presentations and answer questions.
6. Provide Services related to the preparation for litigation, arbitration or other legal/administrative proceedings and appearances.
7. Evaluate and make recommendations in regards to existing infrastructure.

I am not looking for action on this item during this meeting. However, I would like to gather your feedback. Consider the upcoming projects: Lime Silo, Extra storage tank for drinking water, re-drill well 8, drill new well on SG23, drinking water capacity improvements. All of these projects are going to go much smoother if we can get proper recommendations and know exactly how we should proceed with each project.

Again, I would just like to get your thoughts on this.

Thanks!