



SCI ENGINEERING, INC.

EARTH • SCIENCE • SOLUTIONS

GEOTECHNICAL
ENVIRONMENTAL
NATURAL RESOURCES
CULTURAL RESOURCES
CONSTRUCTION SERVICES

August 21, 2025

Jimmy Mundloch
JRG Holdings – Belleville, LLC
P.O. Box 9359
St. Louis, Missouri 63117

RE: Phase One Cultural Resource Survey
Haven Hill Acres
Collinsville, Illinois
SCI No. 2023-1906.40

Dear Jimmy Mundloch:

SCI Engineering, Inc. (SCI) has completed the Phase One Cultural Resource Survey (Phase One CRS) at the above referenced site, the results of which are presented herein. Field investigations within the project area did not identify any National Register of Historic Places (NRHP) eligible cultural resources. As such, it is SCI's opinion that no further work is required, and project clearance is recommended.

SCI appreciates being of service to you on this project. Please contact us if you have any questions or comments regarding this report.

Please contact us if you have any questions or comments regarding this report.

Respectfully,

SCI ENGINEERING, INC.

A handwritten signature in black ink that reads "Jacob Province".

Jacob Province
Archaeologist

A handwritten signature in black ink that reads "Bryan Carlo".

Bryan M. Carlo
Chief Archaeologist

JP/BMC/meh/rah

Enclosures

Appendix A – Figures
Appendix B – Photographic Summary
Appendix C – SHPO Correspondence

Public disclosure of site locations reported herein is prohibited by 16 USC 470W

\\scieng\shared\Projects\2023\2023-1906 Haven Hill Acres\CR\Report\231906.40 Haven Hills-Phase I CRS Report.docx

ARCHAEOLOGICAL SURVEY SHORT REPORT
Illinois Department of Natural Resources
Illinois State Historic Preservation Office
One Natural Resources Way
Springfield, Illinois 62702

REVIEWER _____
DATE _____
____ Accepted ____ Rejected

IHPO LOG NUMBER 015061825

LOCATION INFORMATION AND SURVEY CONDITIONS

County: Madison

Quad: Monks Mound, Illinois 7.5' (Figures 1 and 2)

Project Type/Title: Haven Hills Acres, SCI No. 2023-1906.40

Funding or Permitting Agency: IEPA

Natural Division: (8a) Middle Mississippi Border Division, Glaciated Section

Section: 23 **Township:** 3N **Range:** 8W

UTM: Zone 15S, North 4285675, East 760534

Project Description: The proposed project entails the proposed development of a Supportive Housing Project (SHP). Project plans are available (Figure 3).

Topography: The project area or area of potential effects (APE) consists of sloping terrain located on the bluffs immediately east of the Mississippi River floodplain.

Soils: Menfro silt loam, 2 to 5 percent slopes; Sylvan-Bold silt loams, 10 to 18 percent slopes, eroded; Sylvan-Bold silt loams, 18 to 35 percent slopes, eroded; Wakeland silt loam, 0 to 2 percent slopes, frequently flooded (USDA-NRCS 2025).

Drainage: The project area is primarily drained by a branch of Schoolhouse Creek. Schoolhouse Creek is channelized west of the bluffs and drains into a series of ditches that connect to Horseshoe Lake. Horseshoe Lake is located approximately 6 kilometers west of the project area.

Land Use/Ground Cover (Include Percent Visibility): During investigations, the project area was wooded and rarely offered ground surface visibility more than 10 percent. Most of the project area consisted of steeply graded slopes, often over 40 percent.

Survey Limitations: Steep, heavily eroded, and overgrown slope presented a danger to field crew.

ARCHAEOLOGICAL AND HISTORICAL INFORMATION

Sources:

- 1815 GLO Map of Township 3 North Range 8 West (Figure 4)
- 1853 GLO Map of Township 3 South Range 8 West (Figure 5)
- 1861 Map of Madison County, Illinois (Figure 6)
- 1873 Atlas Map of Madison County, Illinois (Figure 7)

IHPO LOG NUMBER 015061825

- 1888 St. Louis, Illinois 15' USGS Quadrangle (Figure 8)
- 1892 Atlas Map of Madison County, Illinois (Figure 9)
- 1906 Atlas Map of Madison County, Illinois (Figure 10)
- 1935 Monks Mound, Illinois 15' USGS Quadrangle (Figure 11)
- 1954 Monks Mound, Illinois 7.5' USGS Quadrangle (Figure 12)
- 1968 Monks Mound, Illinois 7.5' USGS Quadrangle (Figure 13)
- 1974 Monks Mound, Illinois 7.5' USGS Quadrangle (Figure 14)
- 1998 Monks Mound, Illinois 7.5' USGS Quadrangle (Figure 15)
- 2012 Monks Mound, Illinois 7.5' USGS Quadrangle (Figure 16)
- 2018 Monks Mound, Illinois 7.5' USGS Quadrangle (Figure 17)
- 2024 Monks Mound, Illinois 7.5' USGS Quadrangle (Figure 18)

Previously Reported Sites: There are no previously recorded archaeological sites located within the project area (IAS 2025). Twenty-four additional archaeological sites (11MS70, 11MS117, 11MS123, 11MS143, 11MS144, 11MS465, 11MS617, 11MS889, 11MS901, 11MS908, 11MS1055, 11MS1196, 11MS1215, 11MS1255, 11MS1256, 11MS1330, 11MS1331, 11MS1746, 11MS1778, 11MS1819, 11MS1820, 11MS2486, 11MS2502, 11MS2737) are located within a one-mile radius.

Previous Surveys: The project area has never been subjected to a professional cultural resources survey. Forty-eight surveys have been conducted within a one-mile radius (Survey ID Nos. 830, 902, 1420, 1421, 1716, 2027, 2992, 4097, 5401, 5771, 6868, 6869, 7275, 7276, 8036, 8070, 8706, 9655, 10214, 13417, 15154, 15613, 16692, 17004, 17444, 18037, 18294, 20854, 21536, 22055, 22116, 22189, 23871, 24344, 25473, 25570, 25746, 90118) of these forty-eight 10 are undesignated (Survey ID No. 99999).

Regional Archaeologist Contacted: IAS site file online database consulted 7/22/2025.

Investigation Techniques: Shovel testing conducted at 15-meter intervals as topography allowed.

Acres: 18 acres (72,843 m²)

Time: 20 person hours

Materials: See comments

Sites/Spots Located: None.

Collection Technique: Collection of all precontact and historic material 50 years of age.

Curated: N/A

Phase I Archaeological Reconnaissance Has Located No Archaeological Material; Project Clearance Is Recommended.

Phase I Archaeological Reconnaissance Has Located Archaeological Materials; Site(s) Does (Do) Not Meet Requirements for National Register Eligibility; Project Clearance Is Recommended.

Phase I Archaeological Reconnaissance Has Located Archaeological Materials; Site(s) May Meet Requirements for National Register Eligibility; Phase II Testing Is Recommended.

Phase II Archaeological Investigation Has Indicated That Site(s) Does (Do) Not Meet Requirements for National Register Eligibility; Project Clearance Is Recommended.

IHPO LOG NUMBER 015061825

_____ Phase II Archaeological Investigation Has Indicated That Site(s) Meet Requirements for National Register Eligibility.

COMMENTS:

The approximately 18-acre project area or area of potential effects (APE) is located south of Reese Drive and west of Johnson Hill Road in Collinsville Illinois (Figures 1 and 2). Geographically, the project area is located on the bluffs east of the Mississippi River floodplain. The project area largely consists of steeply sloping terrain with limited topography suited for shovel testing in the west and southeast portions. The project area is a proposed residential development (Figure 3).

Investigative methodology consisted of photographic recordation of the project area environs and shovel testing at 15-meter intervals. Shovel testing typically entails the hand-excavation of small (40-by 40-centimeter (cm)) holes at 15-meter intervals to a depth reaching culturally sterile soils (subsoil) and screening of the resulting spoil through 0.25-inch hardware cloth to search for cultural artifacts.

A review of the IAS site file database indicates the project area has never been subject to a professional cultural resources survey. Forty-eight additional surveys (Survey ID Nos. Doc. Nos. 830, 902, 1420, 1421, 1716, 2027, 2992, 4097, 5401, 5771, 6868, 6869, 7275, 7276, 8036, 8070, 8706, 9655, 10214, 13417, 15154, 15613, 16692, 17004, 17444, 18037, 18294, 20854, 21536, 22055, 22116, 22189, 23871, 24344, 25473, 25570, 25746, 90118) have been previously completed within a one-mile radius of the project area, ten of which is unregistered (Survey ID No. 99999).

There are no previously recorded archaeological sites located within the project area (IIAS 2025). Twenty-four archaeological sites (11MS70, 11MS117, 11MS123, 11MS143, 11MS144, 11MS465, 11MS617, 11MS889, 11MS901, 11MS908, 11MS1055, 11MS1196, 11MS1215, 11MS1255, 11MS1256, 11MS1330, 11MS1331, 11MS1746, 11MS1778, 11MS1819, 11MS1820, 11MS2486, 11MS2502, 11MS2737) are located within a one-mile radius.

A review of available historic maps provides insight regarding the nature of property ownership and the presence or absence of structures within the project area over time (Figures 4 through 18). The earliest depictions of the project area are found on the 1815 and 1853 United States General Land Office (GLO) maps (Figures 4 and 5), however, GLO maps do not depict structures. One of the earliest available structurally annotated maps is the 1861 map of Madison County (Holmes & Arnold 1861) (Figure 6). No structures are depicted within the project area on that map or on subsequent historic maps of the region (Figure 9 through 15). The 2012, 2018, and 2024 Monks Mound, Illinois 7.5' USGS quadrangles are not structurally annotated (Figures 16 through 18).

A check of the Illinois Historic Preservation Office's HARGIS online database (accessed July 2025) indicated that there are no National Register of Historic Places (NRHP) listed properties, Historic Districts, or undetermined historic resources within the project area. There are four NRHP properties within a one-mile radius. Of these properties two have a status of undetermined and two have been entered into the National Register (Figure 19).

RESULTS OF INVESTIGATIONS

SCI personnel conducted investigations within the project area on July 25, 2025. During investigations, much of the project area was wooded and ground visibility rarely exceeded 10 percent (Photos 1 and 2) (Figure 20). Most of the area was dominated by steeply sloping terrain (Photos 3 through 5). The location of all shovel tests was recorded using a GPS unit with sub-meter accuracy (Figure 21). Due to topographic restraints shovel testing was limited to the western portion of the project area as well as a small relatively

IHPO LOG NUMBER 015061825

level portion in the southeast. Much of the area exhibited slope of more than 20 percent and was unable to be safely shovel tested (Figure 22). These areas were visually inspected to locate cultural material as well as locations adequate for shovel testing.

A total of 45 shovel tests (ST1 through ST45) were excavated in the wooded areas within the western portion of the project area (Appendix D). The shovel test profiles each exhibited dark brown (10YR 3/3) silty clay loam that extended from the ground surface to approximately 6 cm below the ground surface. The following stratum was yellowish brown (10YR 5/6) clay loam B horizon (subsoil) from approximately 8 to 20 cm (Photos 6 and 7). A small relatively level area in the western portion of the project was also able to safely shovel tested. These shovel tests (ST46–ST49) shared a similar soil profile to ST1 through ST45. None of these shovel tests yielded cultural material. The soils mapped in this area are Menfro soil loams, which typically display a deeper A horizon (USDA-NRCS 2025). Several berms and push piles though the project area suggest that earthmoving activities have impacted the flat portions of the project area (Photo 8). The northeast portion of the project area is also relatively flat, however much of the area is occupied by a creek or has been impacted by the construction of a power substation and gravel is found throughout that area (Photos 9 and 10).

SUMMARY AND CONCLUSIONS

On July 25, 2025, SCI personnel conducted a Phase One CRS of the 18-acre project area in Collinsville, Illinois. Fieldwork included shovel testing at 15-meter intervals in areas with less than 10 percent surface visibility and less than 20 percent slope. A total of 49 shovel tests were excavated where terrain and conditions allowed. None of these shovel tests yielded cultural material. The lack of soil integrity as well as the presence of several push piles and berms within the project area suggest the areas that are level have been subject to previous earthmoving activities. Because no cultural material was recovered, and no archaeological sites were identified SCI recommends no further archaeological work within the project area.

ARCHAEOLOGICAL CONTRACTOR INFORMATION:

Archaeological Contractor: SCI Engineering, Inc.

Address/Phone: 650 Pierce Boulevard
O’Fallon, Illinois 62269
(618) 624-6969

Surveyor: Jacob Province, Theodore Hallam, Taavi Larry, and Kathryn Fritsch

Survey Date(s): July 25, 2025

Report Completed By: Jacob Province **Date:** August 21, 2024

Submitted By (signature and title): *Bryan Carlo* Chief Archaeologist

ATTACHMENT CHECK LIST: (1 Through #4 Are Mandatory)

- X 1) Relevant Portion of USGS 7.5’ Topographic Quadrangle Map(s) Showing Project Location and Any Recorded Sites

- X 2) Project Map(s) Depicting Survey Limits And, When Applicable, Approximate Site Limits and Concentrations of Cultural Materials.

IHPO LOG NUMBER 015061825

- X 3) Site Form(s)
- X 4) All Relevant Project Correspondence.
- X 5) Additional Information Sheets As Necessary.

ADDRESS OF OWNER/AGENT/AGENCY TO WHOM SHPO COMMENT SHOULD BE MAILED:

Jimmy Mundloch
JRG Holdings – Belleville, LLC
P.O. Box 9359
St. Louis, Missouri 63117

cc. Bryan Carlo
SCI Engineering, Inc.
650 Pierce Boulevard
O’Fallon, Illinois 62269

Contact Person: Bryan Carlo

Phone: (618) 206-3048

REFERENCES

Brink, McCormick & Company
1873 *Illustrated Encyclopedia and Atlas Map of Madison County, Ill.* Brink, McCormick & Co. St. Louis, Missouri.

George A Ogle & Company
1906 *Standard Atlas of Madison County, Illinois.* George A. Ogle. Chicago.

Historic and Architectural Resources Geographical Information System (HARGIS)
2025 Electronic resource.
<https://maps.dnr.illinois.gov/portal/apps/webappviewer/index.html?id=8f6e15ca8973412bbd534e6990da752d>, accessed July 2025.

Illinois Inventory of Archaeological Sites (IIAS)
2025 Electronic resource.
<https://maps.dnr.illinois.gov/portal/apps/webappviewer/index.html?id=91ce4b91ea9c4c2687fa37098b0c26d9>, accessed July 2025.

Riniker, Henry, Robert Hagnauer, and George K. Dickson
1892 *New Atlas of Madison County, State of Illinois.* Riniker, Hagnauer, and Dickson.

Schwegman, John
1997 *Illinois’ Natural Divisions.* The Illinois Steward, Urbana, Illinois.

United States Geological Survey
1888 St. Louis, Illinois 15’ USGS Quadrangle
1935 Monks Mound, Illinois 15’ USGS Quadrangle
1954 Monks Mound, Illinois 7.5’ USGS Quadrangle
1968 Monks Mound, Illinois 7.5’ USGS Quadrangle (Photo revised)
1974 Monks Mound, Illinois 7.5’ USGS Quadrangle (Photo revised)
1998 Monks Mound, Illinois 7.5’ USGS Quadrangle
2012 Monks Mound, Illinois 7.5’ USGS Quadrangle
2018 Monks Mound, Illinois 7.5’ USGS Quadrangle
2024 Monks Mound, Illinois 7.5’ USGS Quadrangle

IHPO LOG NUMBER 015061825

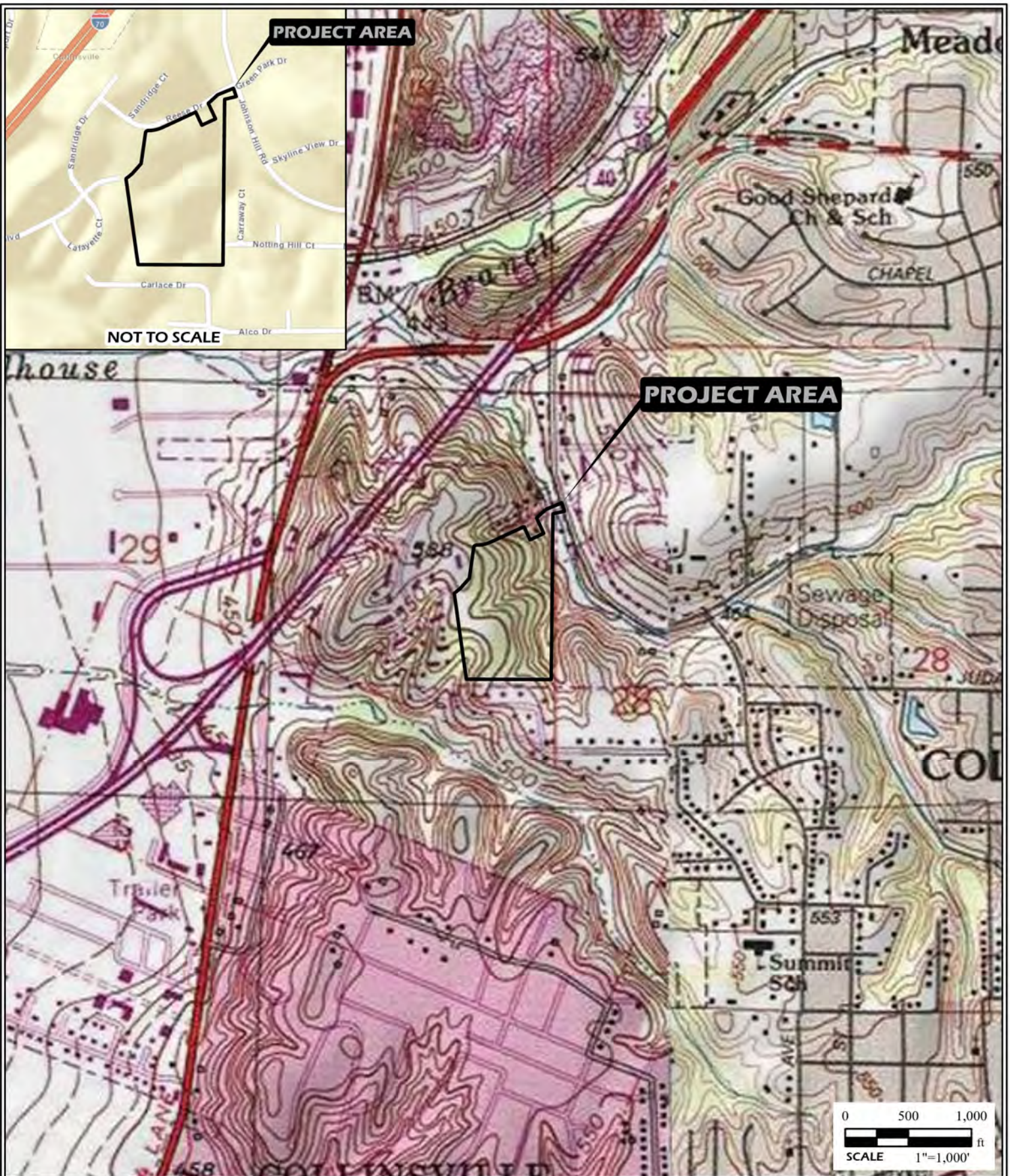
United States General Land Office



1815 GLO Map of Township 3 North Range 8 West

1853 GLO Map of Township 3 South Range 8 West

REVIEWER'S COMMENTS:

Appendix A



	PROJECT NAME HAVEN HILL ACRES COLLINSVILLE, ILLINOIS		GENERAL NOTES/LEGEND USGS TOPOGRAPHIC MAP MONKS MOUND, ILLINOIS QUADRANGLE DATED 1993 10' CONTOURS COLLINSVILLE, ILLINOIS QUADRANGLE DATED 1991 10' CONTOURS		 FIGURE 1
	VICINITY AND TOPOGRAPHIC MAP		STREET MAP HTTP://GOTO.ARCGISONLINE.COM/MAPS/WORLD_STREET_MAP		
DRAWN BY CJD CHECKED BY BMC	FIGURE DATE 08/05/2025	JOB NUMBER 2023-1906.40			



PROJECT NAME
 HAVEN HILL ACRES
 COLLINSVILLE, ILLINOIS

AERIAL PHOTOGRAPH

DRAWN BY	CJD	FIGURES DATE	JOB NUMBER
CHECKED BY	BMC	08/05/2025	2023-1906.40

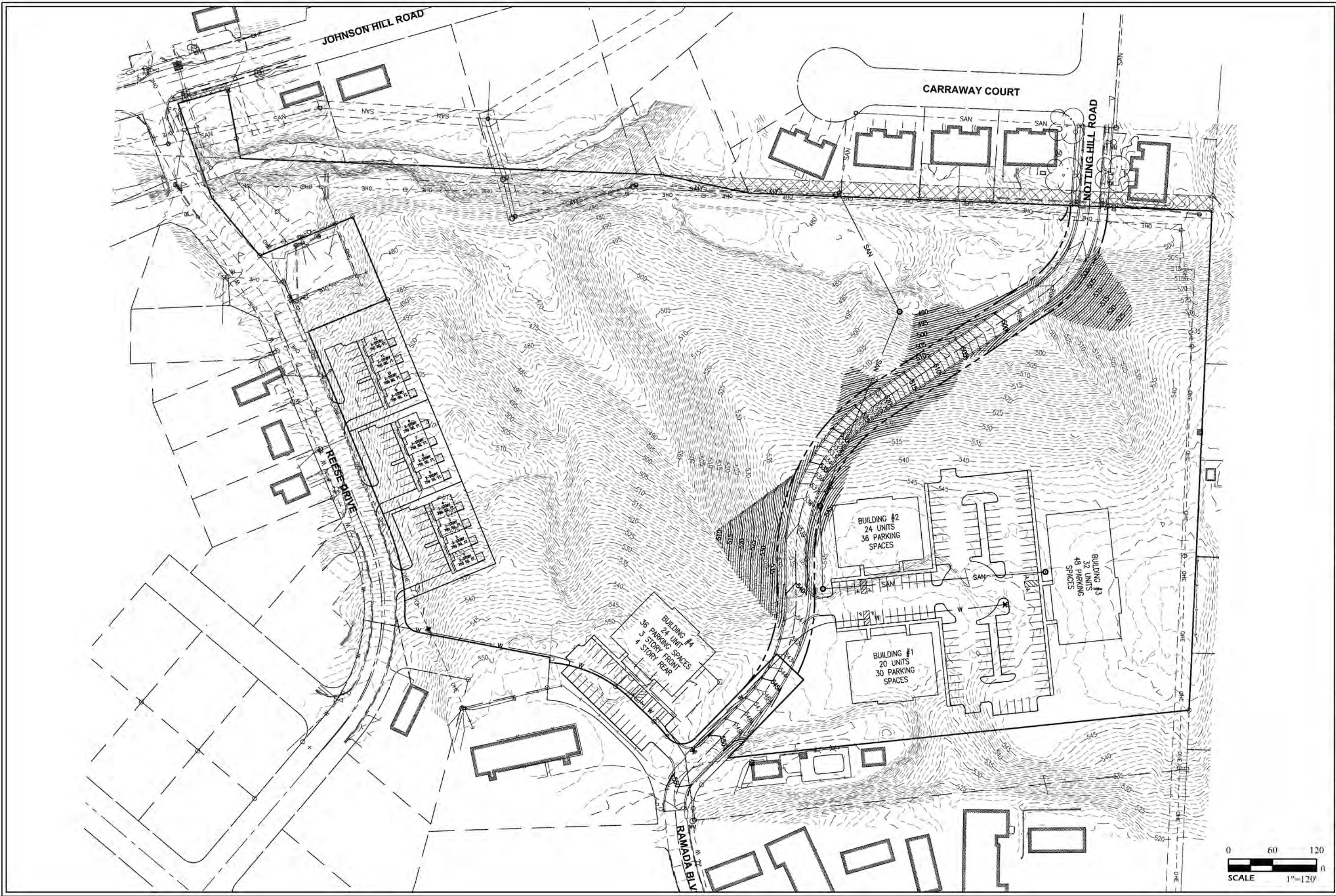
GENERAL NOTES/LEGEND

AERIAL PHOTOGRAPH OBTAINED FROM GOOGLE EARTH 11/2022.

DIMENSIONS AND LOCATIONS ARE APPROXIMATE; ACTUAL MAY VARY.
 DRAWING SHALL NOT BE USED OUTSIDE THE CONTEXT OF THE REPORT FOR WHICH IT WAS GENERATED.



FIGURE
 2



GENERAL NOTES/LEGEND

PLAN PROVIDED 11/05/2024 BY TWM.

DIMENSIONS AND LOCATIONS ARE APPROXIMATE. ACTUAL MAY VARY. DRAWING SHALL NOT BE USED OUTSIDE THE CONTEXT OF THE REPORT FOR WHICH IT WAS GENERATED.

PROJECT NAME

HAVEN HILL ACRES
 COLLINSVILLE, ILLINOIS

PROJECT PLAN



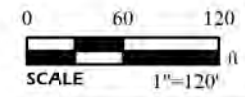
JOB NUMBER
2023-1906.40

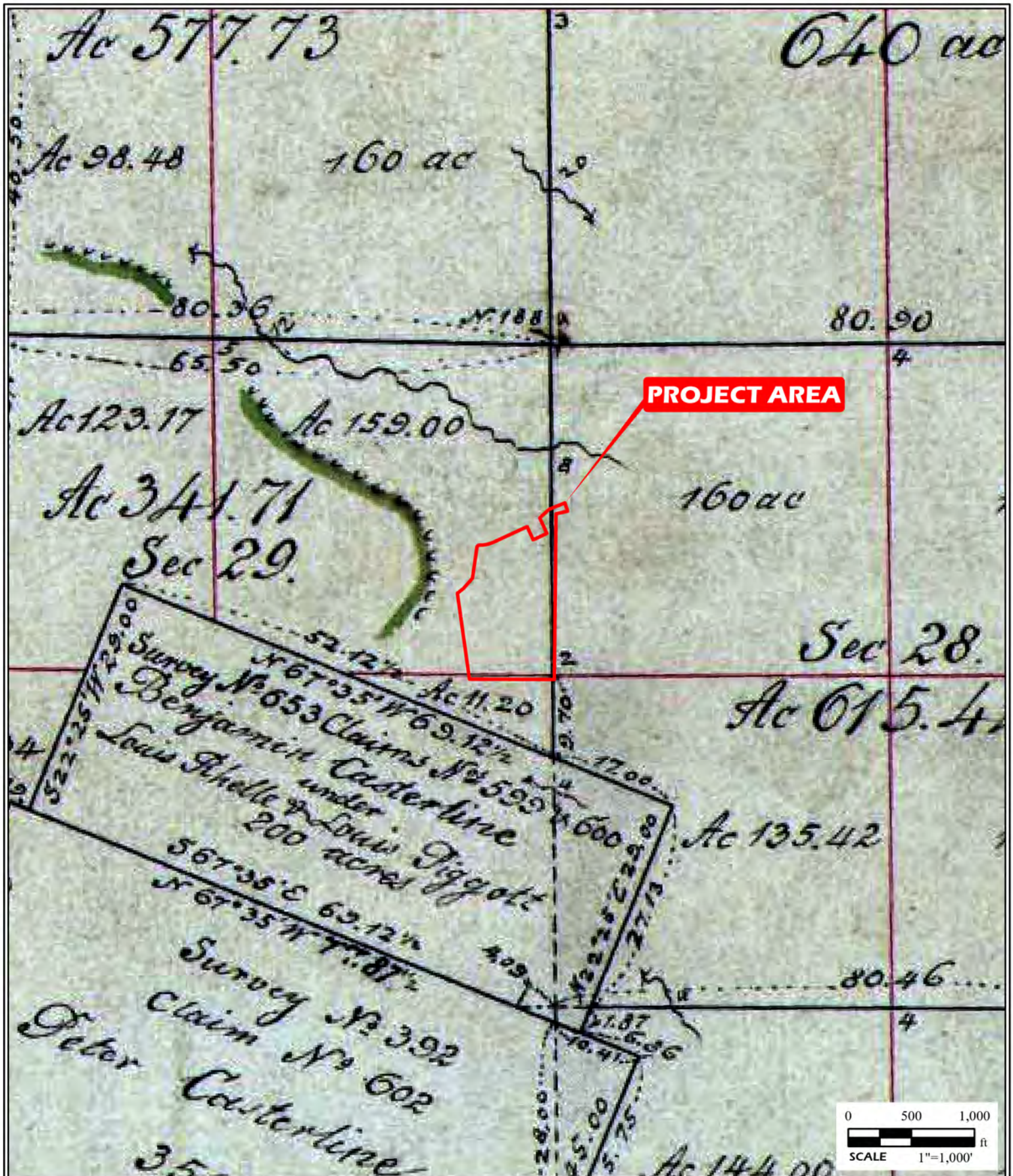
FIGURE DATE
08/05/2025

DRAWN BY
CJD

CHECKED BY
BMC

FIGURE
3





PROJECT NAME
 HAVEN HILL ACRES
 COLLINSVILLE, ILLINOIS

1853 GLO MAP

DRAWN BY	CJD	FIGURE DATE	JOB NUMBER
CHECKED BY	BMC	08/06/2025	2023-1906.40



GENERAL NOTES/LEGEND

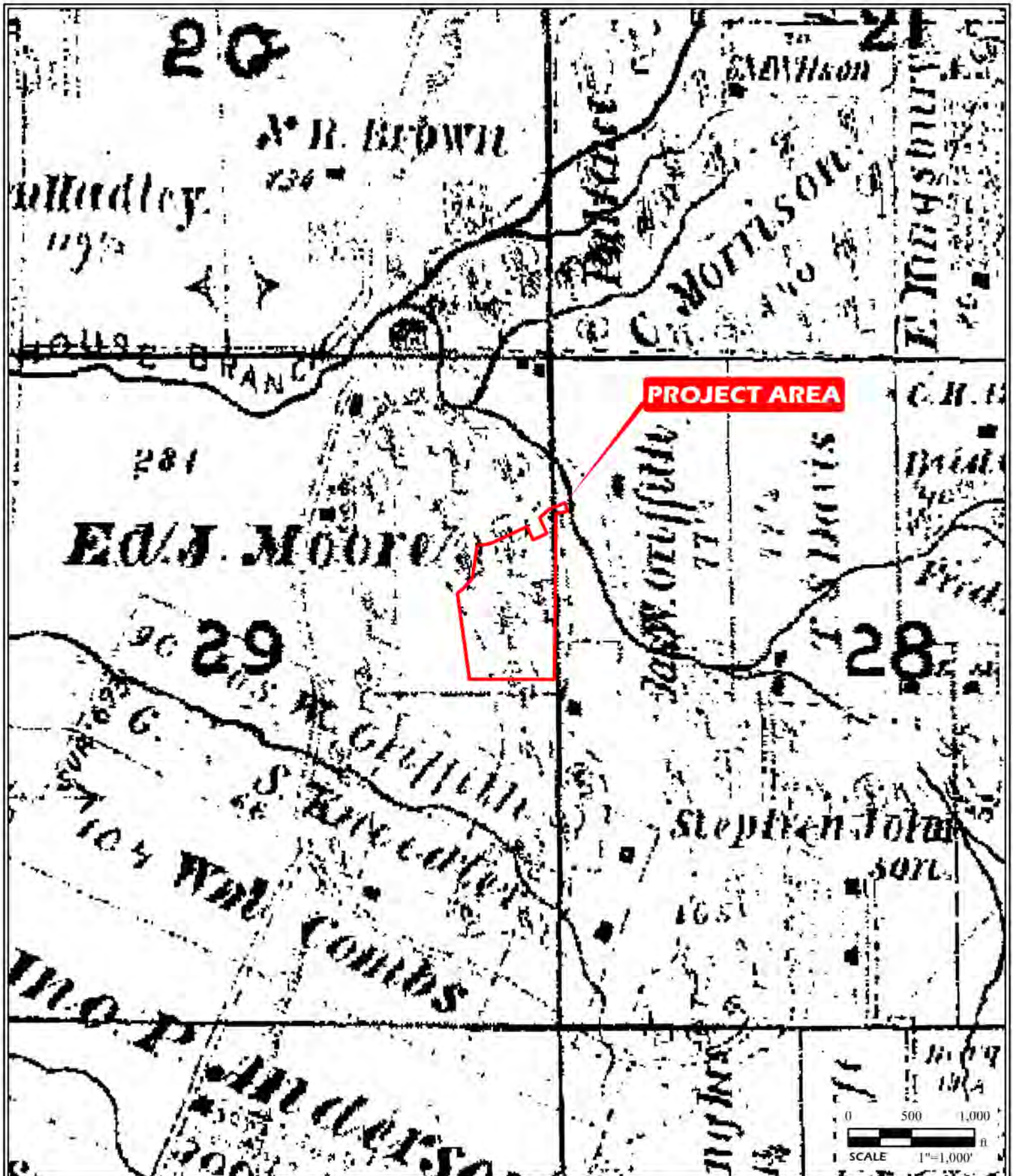
UNITED STATES GENERAL LAND OFFICE
 1853 GLO MAP OF TOWNSHIP 3 NORTH RANGE 8 WEST



FIGURE
 5



	PROJECT NAME HAVEN HILL ACRES COLLINSVILLE, ILLINOIS		GENERAL NOTES/LEGEND HOLMES, J. W. AND ARNOLD 1861 MAP OF MADISON COUNTY, ILLINOIS. J. W. HOLMES, BUFFALO, NEW YORK	 FIGURE 6
	1861 MADISON COUNTY MAP			
	DRAWN BY CJD	FIGURE DATE 08/06/2025		
CHECKED BY BMC				



PROJECT NAME
 HAVEN HILL ACRES
 COLLINSVILLE, ILLINOIS

1873 ATLAS

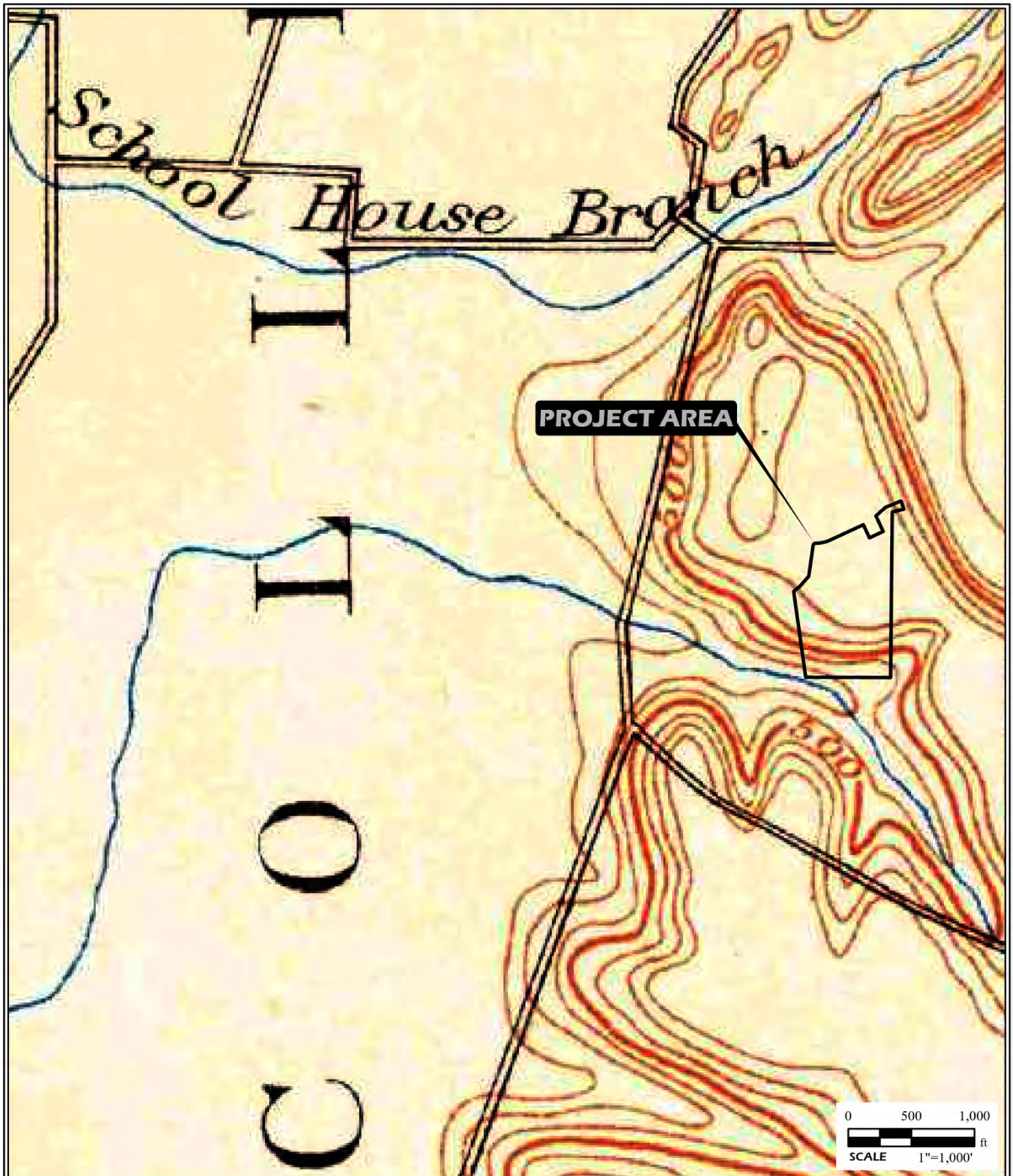
DRAWN BY	CJD	FIGURE DATE	JOB NUMBER
CHECKED BY	BMC	08/05/2025	2023-1906.40

GENERAL NOTES/LEGEND

BRINK, MCCORMICK & COMPANY
 1873 ILLUSTRATED ENCYCLOPEDIA AND ATLAS MAP OF MADISON COUNTY, ILL.
 BRINK, MCCORMICK & CO. ST. LOUIS, MISSOURI.



FIGURE
 7



PROJECT NAME

HAVEN HILL ACRES
COLLINSVILLE, ILLINOIS

1888 TOPOGRAPHIC MAP

DRAWN BY	CJD	FIGURE DATE	08/05/2025	JOB NUMBER	2023-1906.40
CHECKED BY	BMC				

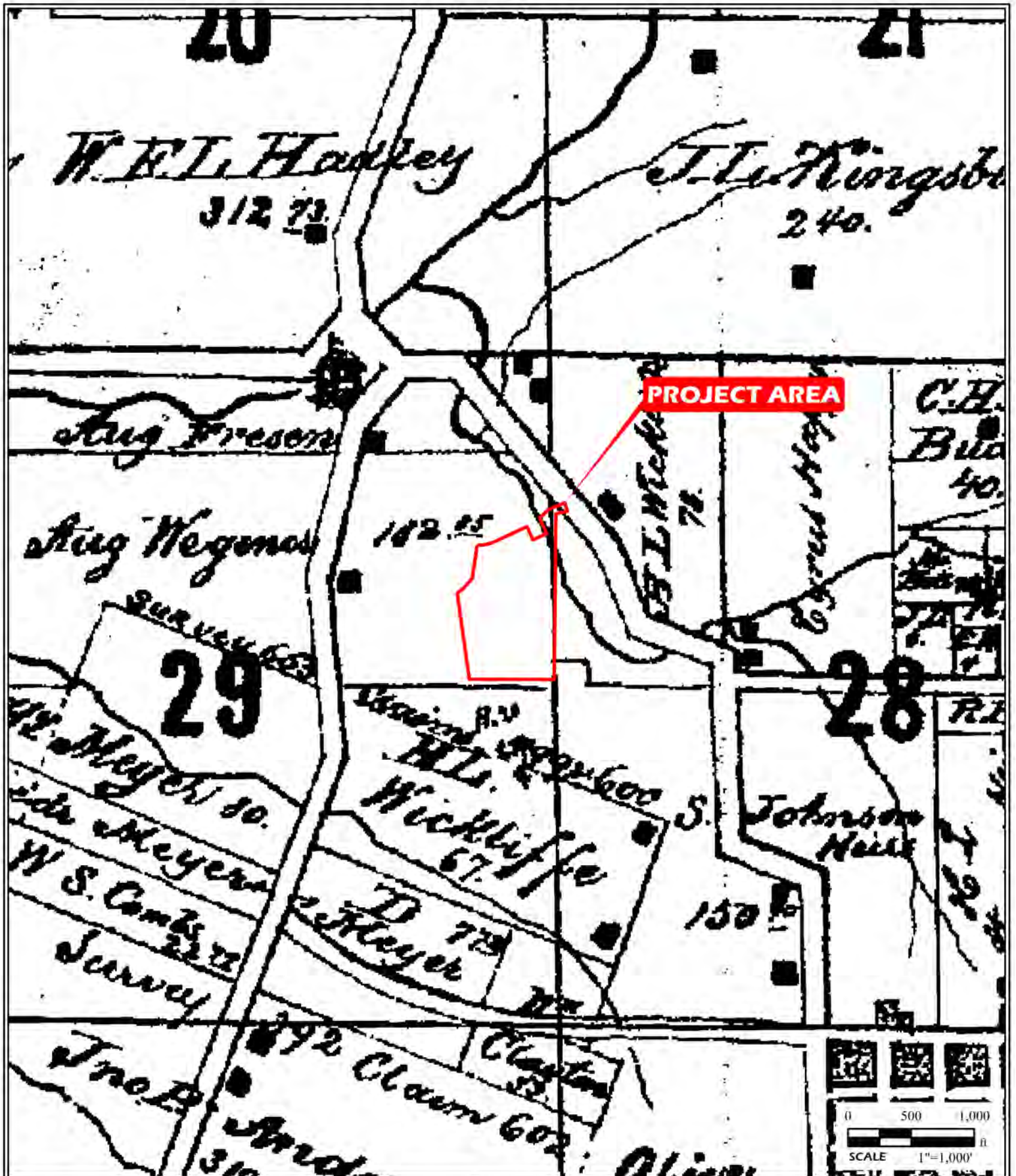
GENERAL NOTES/LEGEND

USGS TOPOGRAPHIC MAP
ST. LOUIS, ILLINOIS - MISSOURI QUADRANGLE
DATED 1888
20' CONTOURS



FIGURE
8





PROJECT NAME
 HAVEN HILL ACRES
 COLLINSVILLE, ILLINOIS

1892 ATLAS

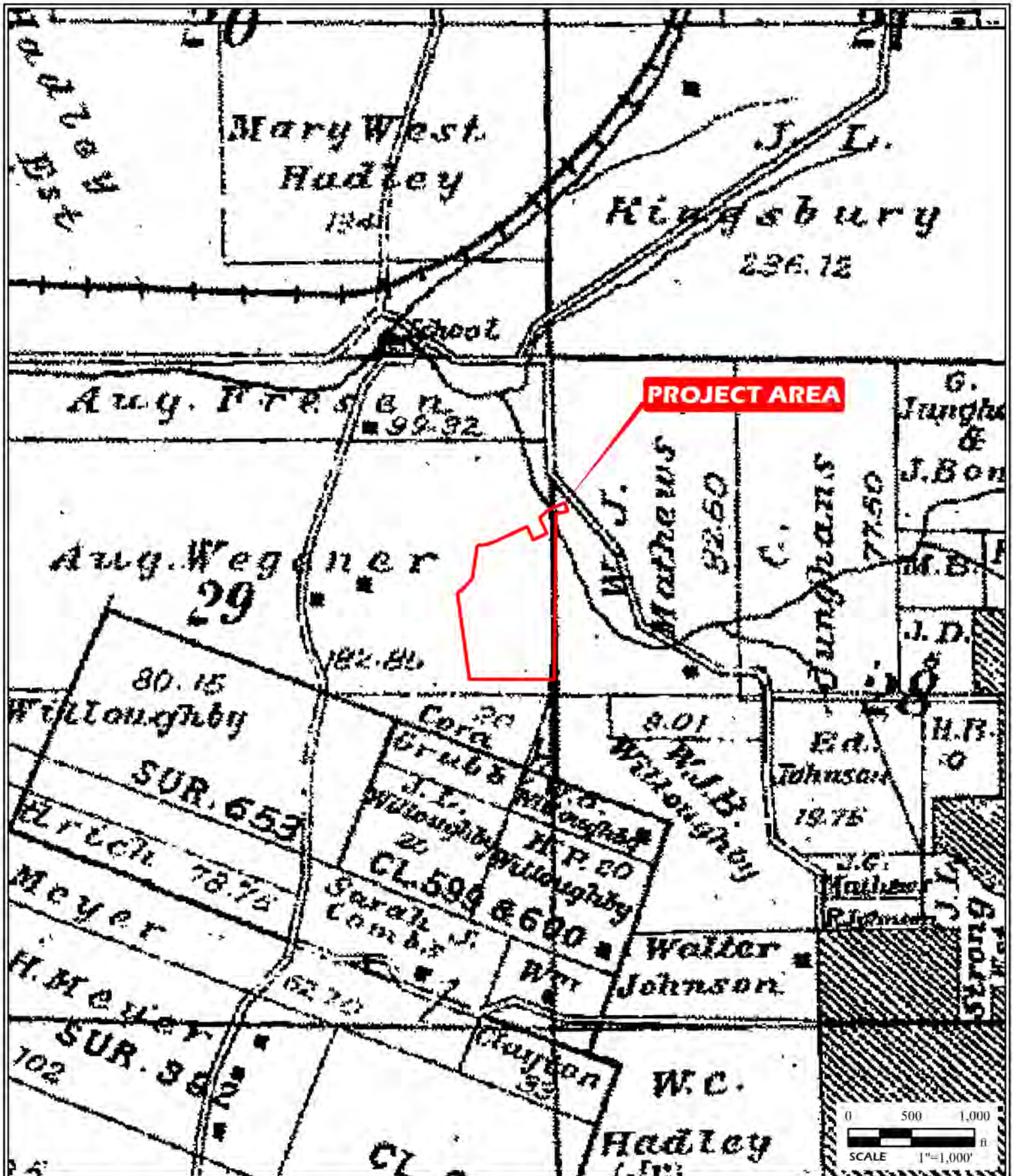
DRAWN BY	CJD	FIGURE DATE	JOB NUMBER
CHECKED BY	BMC	08/05/2025	2023-1906.40

GENERAL NOTES/LEGEND

RINKER, HENRY, ROBERT HAGNAUER, AND GEORGE K. DICKSON
 1892 NEW ATLAS OF MADISON COUNTY, STATE OF ILLINOIS.
 RINKER, HAGNAUER, AND DICKSON.



FIGURE
 9



PROJECT NAME
 HAVEN HILL ACRES
 COLLINSVILLE, ILLINOIS

1906 ATLAS

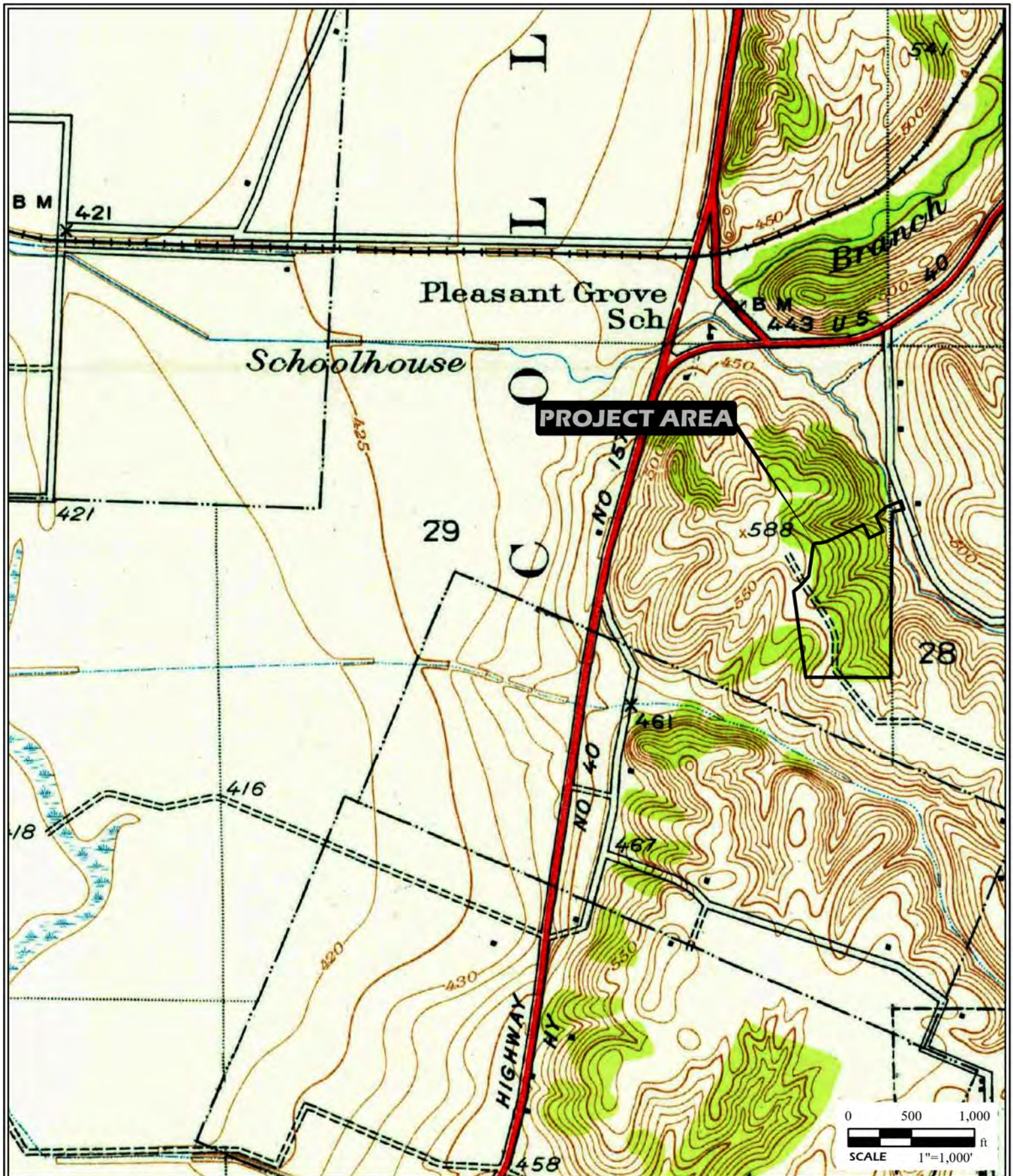
DRAWN BY	CJD	FIGURE DATE	JOB NUMBER
CHECKED BY	BMC	08/05/2025	2023-1906.40

GENERAL NOTES/LEGEND

GEORGE A OGLE & COMPANY
 1906 STANDARD ATLAS OF MADISON COUNTY, ILLINOIS.
 GEORGE A. OGLE, CHICAGO.



FIGURE
 7



PROJECT NAME
 HAVEN HILL ACRES
 COLLINSVILLE, ILLINOIS

1935 TOPOGRAPHIC MAP

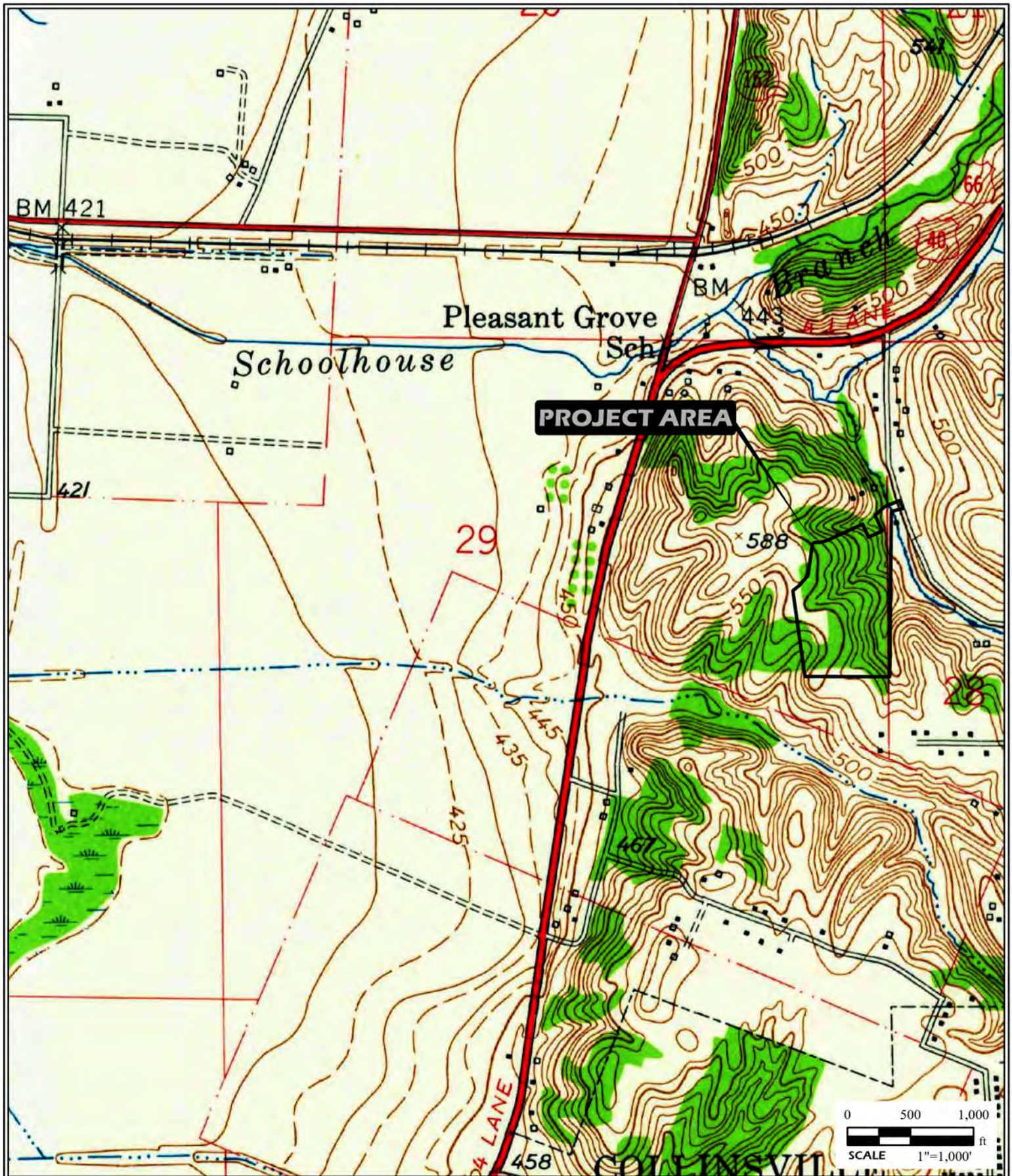
DRAWN BY	CJD	FIGURE DATE	JOB NUMBER
CHECKED BY	BMC	08/05/2025	2023-1906.40

GENERAL NOTES/LEGEND

USGS TOPOGRAPHIC MAP
 MONKS MOUND, ILLINOIS QUADRANGLE
 DATED 1935
 5' AND 10' CONTOURS



FIGURE
 11



PROJECT NAME
 HAVEN HILL ACRES
 COLLINSVILLE, ILLINOIS

1954 TOPOGRAPHIC MAP

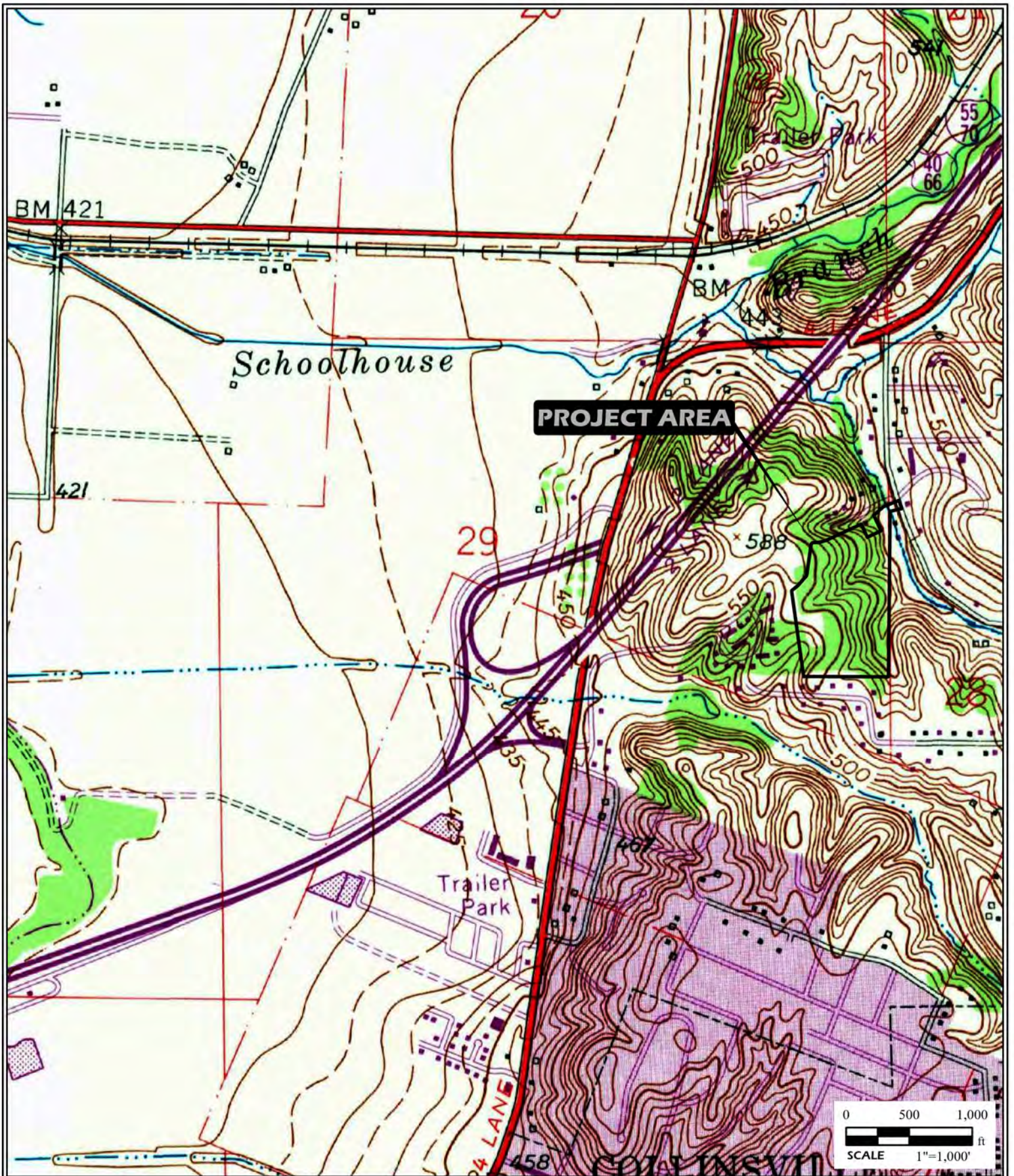
DRAWN BY	CJD	FIGURE DATE	JOB NUMBER
CHECKED BY	BMC	08/05/2025	2023-1906.40

GENERAL NOTES/LEGEND

USGS TOPOGRAPHIC MAP
 MONKS MOUND, ILLINOIS QUADRANGLE
 DATED 1954
 10' CONTOURS



FIGURE
 12



PROJECT NAME
 HAVEN HILL ACRES
 COLLINSVILLE, ILLINOIS

1968 TOPOGRAPHIC MAP

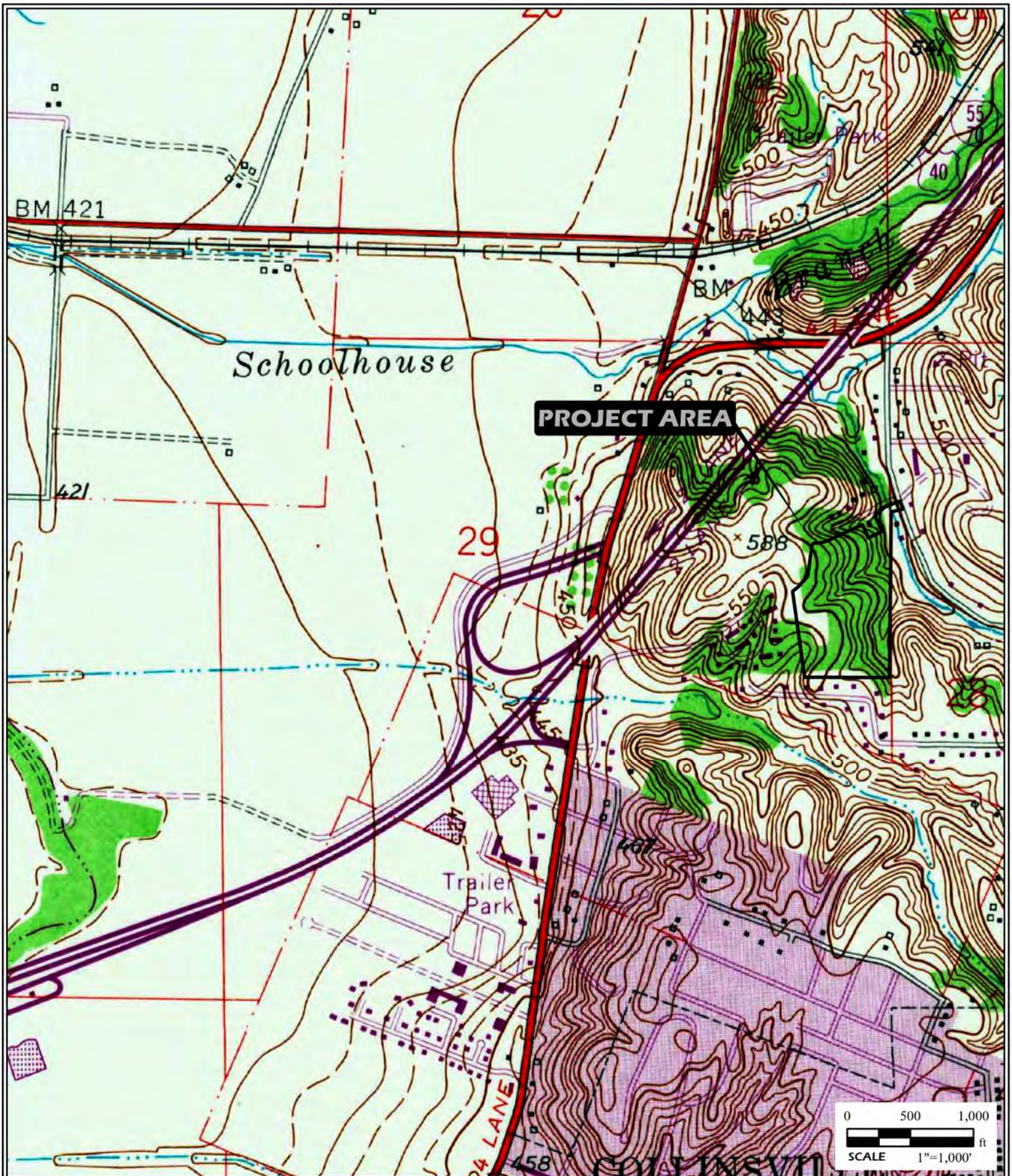
DRAWN BY	CJD	FIGURE DATE	JOB NUMBER
CHECKED BY	BMC	08/05/2025	2023-1906.40

GENERAL NOTES/LEGEND

USGS TOPOGRAPHIC MAP
 MONKS MOUND, ILLINOIS QUADRANGLE
 DATED 1954, PHOTO REVISED 1968
 10' CONTOURS



FIGURE
 13



PROJECT NAME
 HAVEN HILL ACRES
 COLLINSVILLE, ILLINOIS

1974 TOPOGRAPHIC MAP

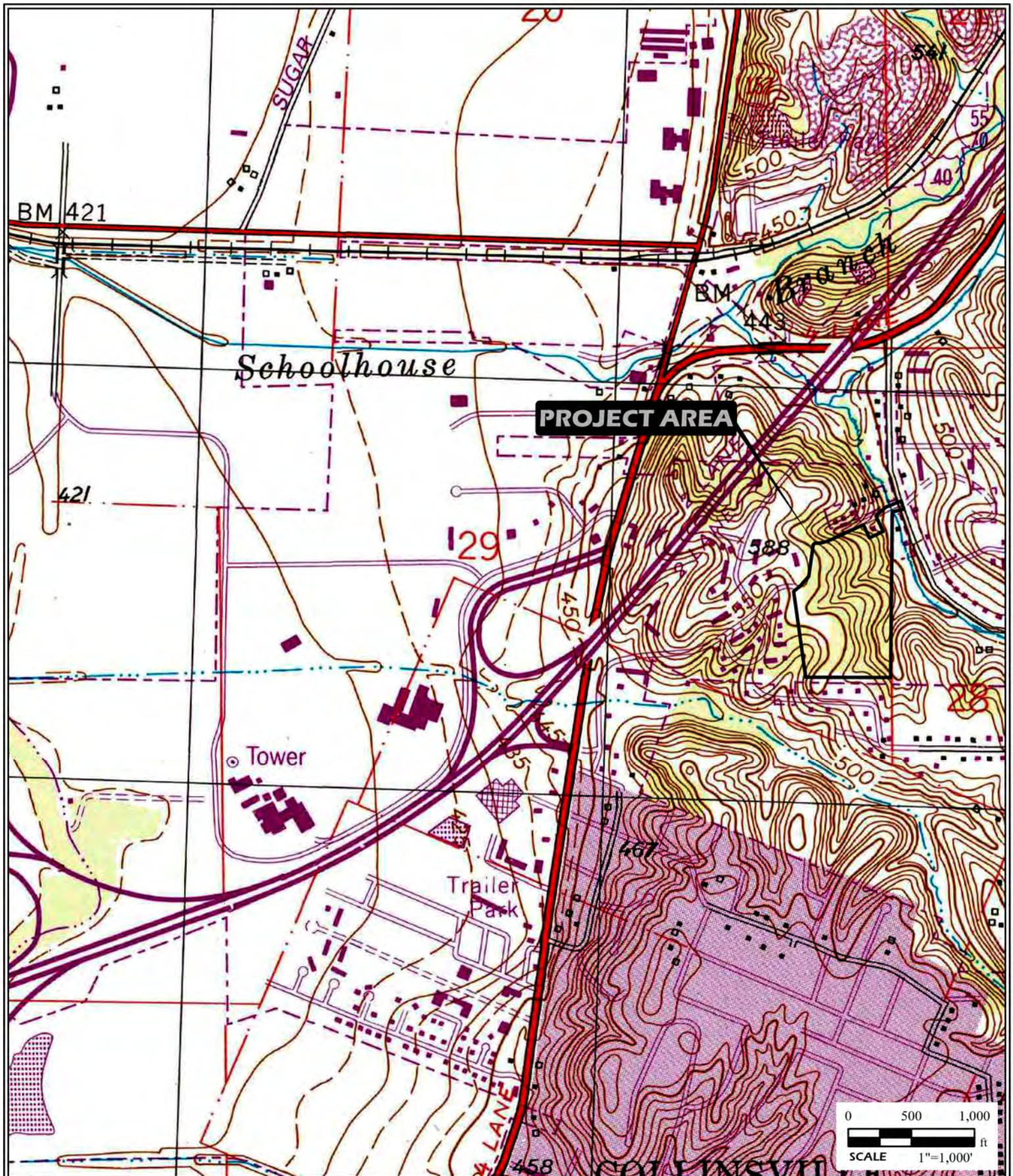
DRAWN BY	CJD	FIGURE DATE	JOB NUMBER
CHECKED BY	BMC	08/05/2025	2023-1906.40

GENERAL NOTES/LEGEND

USGS TOPOGRAPHIC MAP
 MONKS MOUND, ILLINOIS QUADRANGLE
 DATED 1954, PHOTO REVISED 1968 AND 1974
 10' CONTOURS



FIGURE
 14



PROJECT NAME

HAVEN HILL ACRES
COLLINSVILLE, ILLINOIS

1998 TOPOGRAPHIC MAP

GENERAL NOTES/LEGEND

USGS TOPOGRAPHIC MAP
MONKS MOUND, ILLINOIS QUADRANGLE
DATED 1998
10' CONTOURS



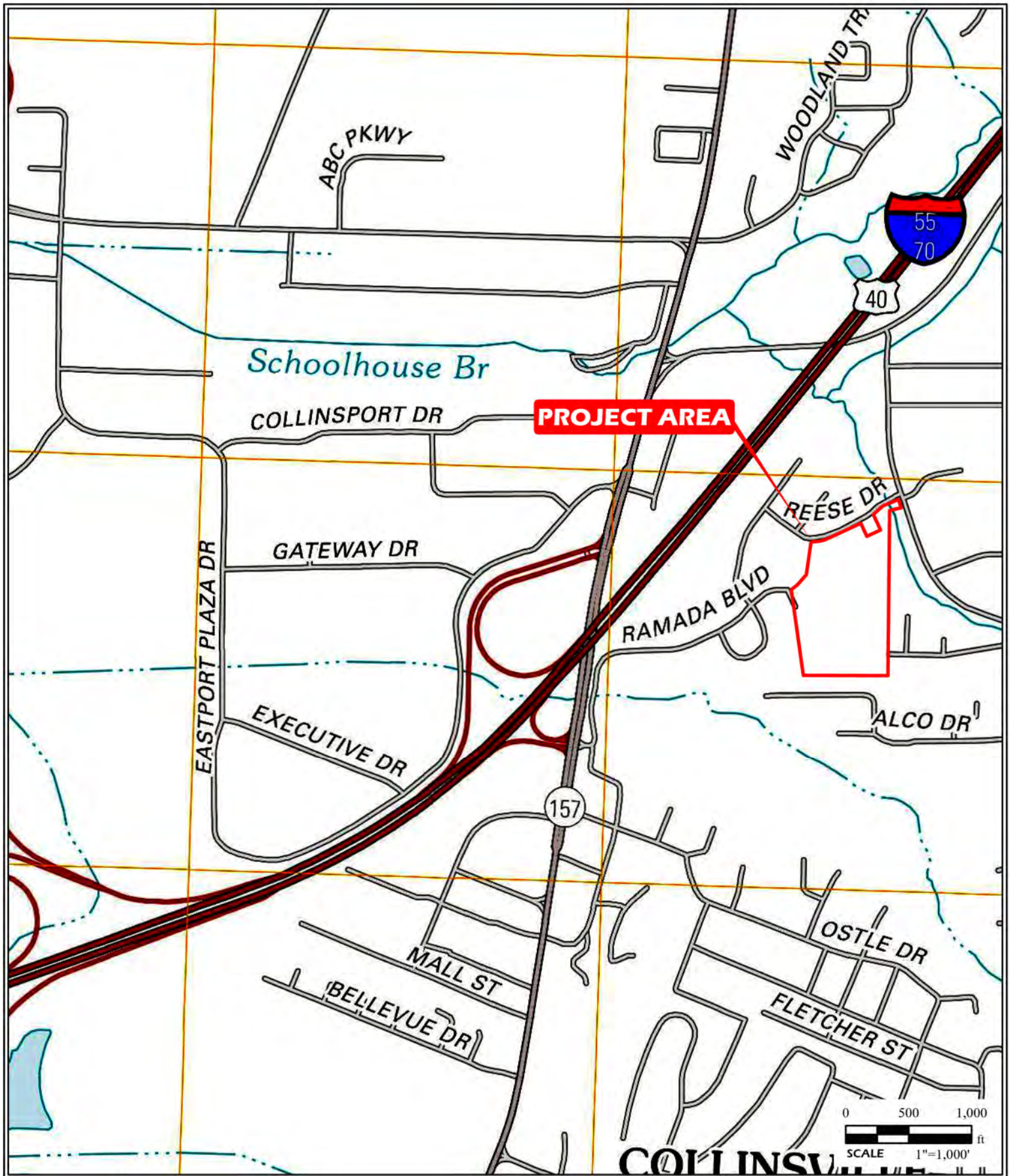
DRAWN BY CJD
CHECKED BY BMC



FIGURE DATE
08/05/2025

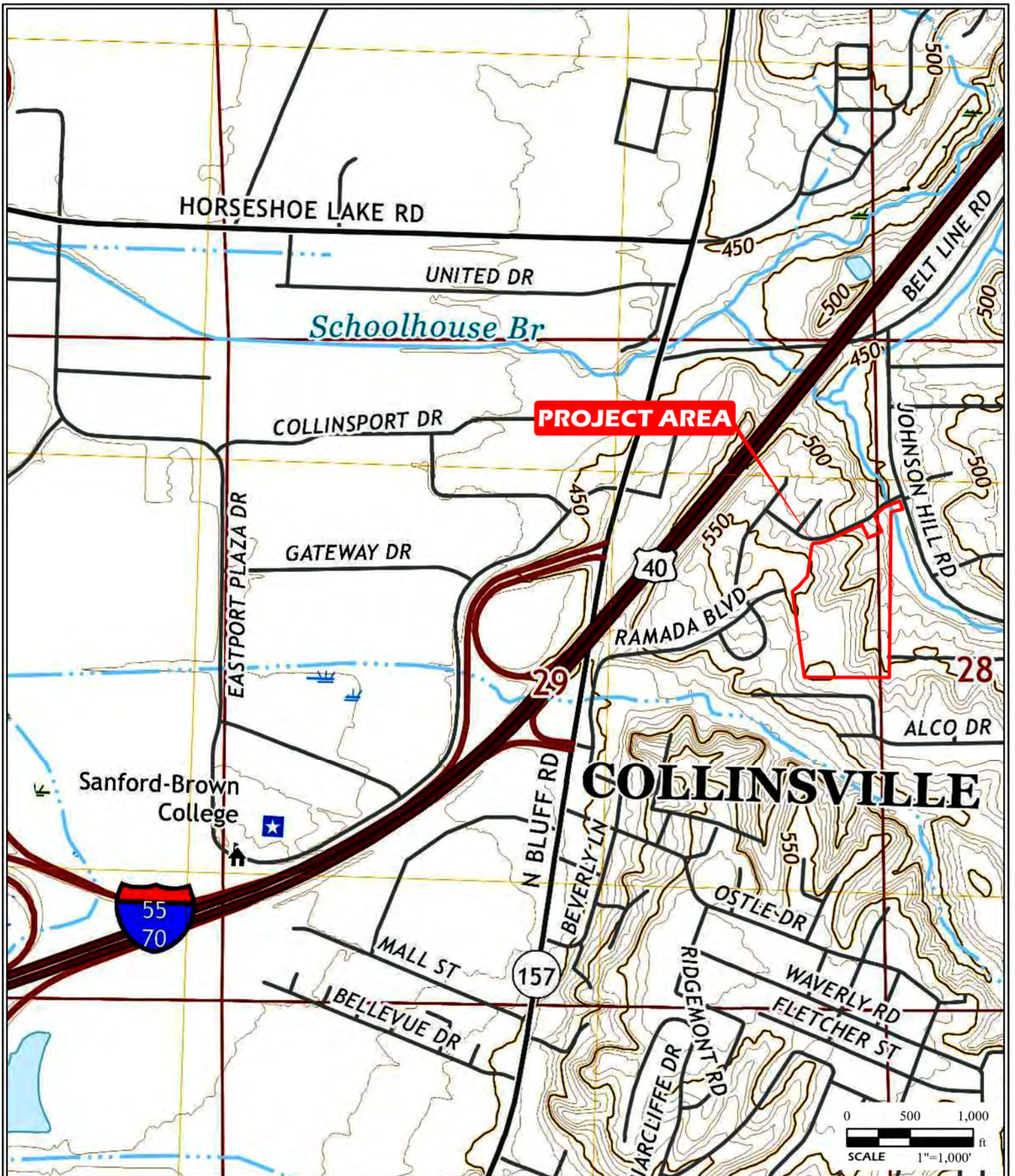
JOB NUMBER
2023-1906.40



FIGURE
15



	PROJECT NAME HAVEN HILL ACRES COLLINSVILLE, ILLINOIS		GENERAL NOTES/LEGEND USGS TOPOGRAPHIC MAP MONKS MOUND, ILLINOIS QUADRANGLE DATED 2012 10' CONTOURS	 FIGURE 16
	2012 TOPOGRAPHIC MAP			
	DRAWN BY CJD	FIGURE DATE 08/05/2025		
CHECKED BY BMC				



PROJECT NAME
 HAVEN HILL ACRES
 COLLINSVILLE, ILLINOIS

2018 TOPOGRAPHIC MAP

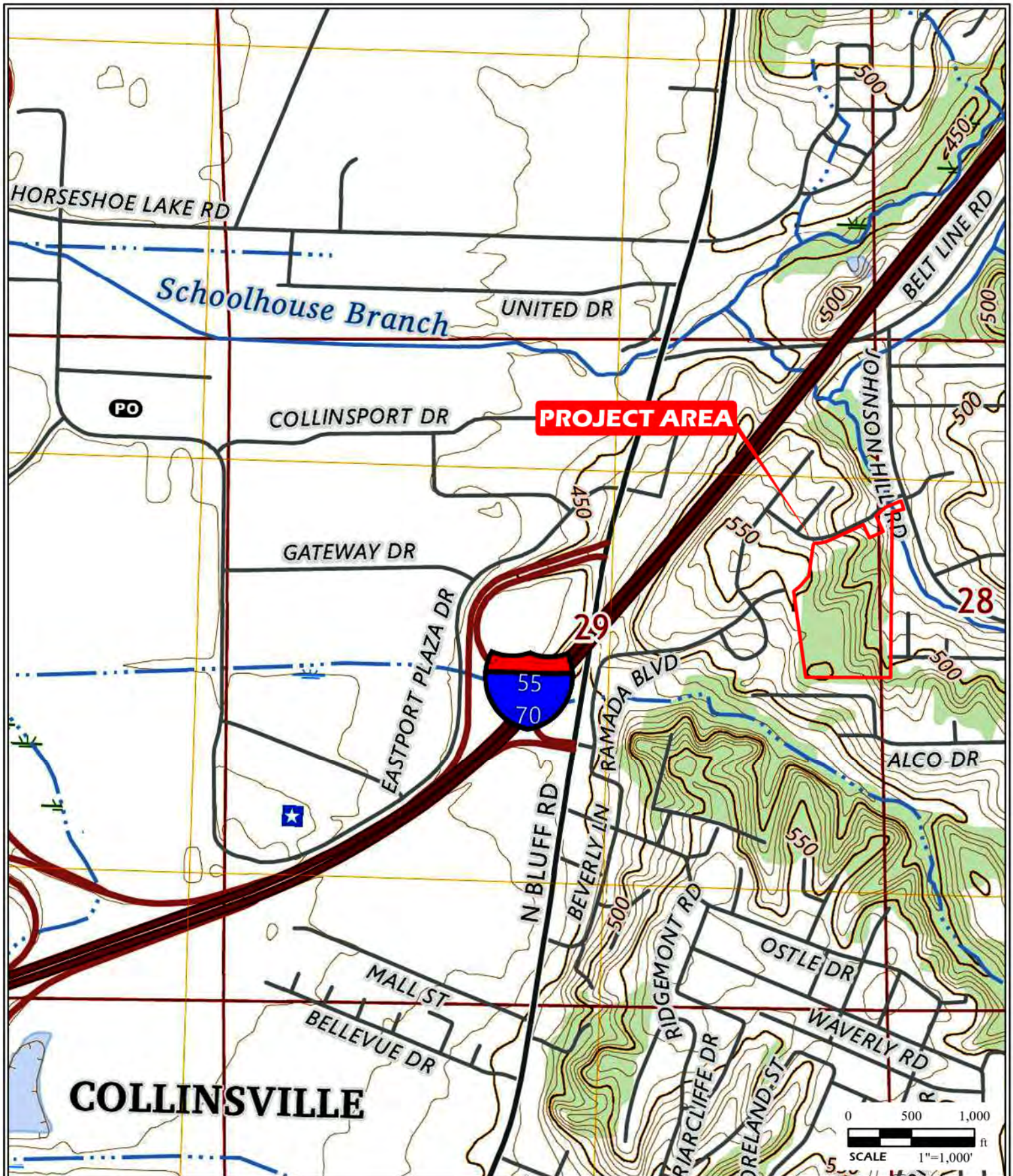
DRAWN BY	CJD	FIGURE DATE	JOB NUMBER
CHECKED BY	BMC	08/05/2025	2023-1906.40

GENERAL NOTES/LEGEND

USGS TOPOGRAPHIC MAP
 MONKS MOUND, ILLINOIS QUADRANGLE
 DATED 2018
 10' CONTOURS



FIGURE
 17



PROJECT NAME
 HAVEN HILL ACRES
 COLLINSVILLE, ILLINOIS

2024 TOPOGRAPHIC MAP

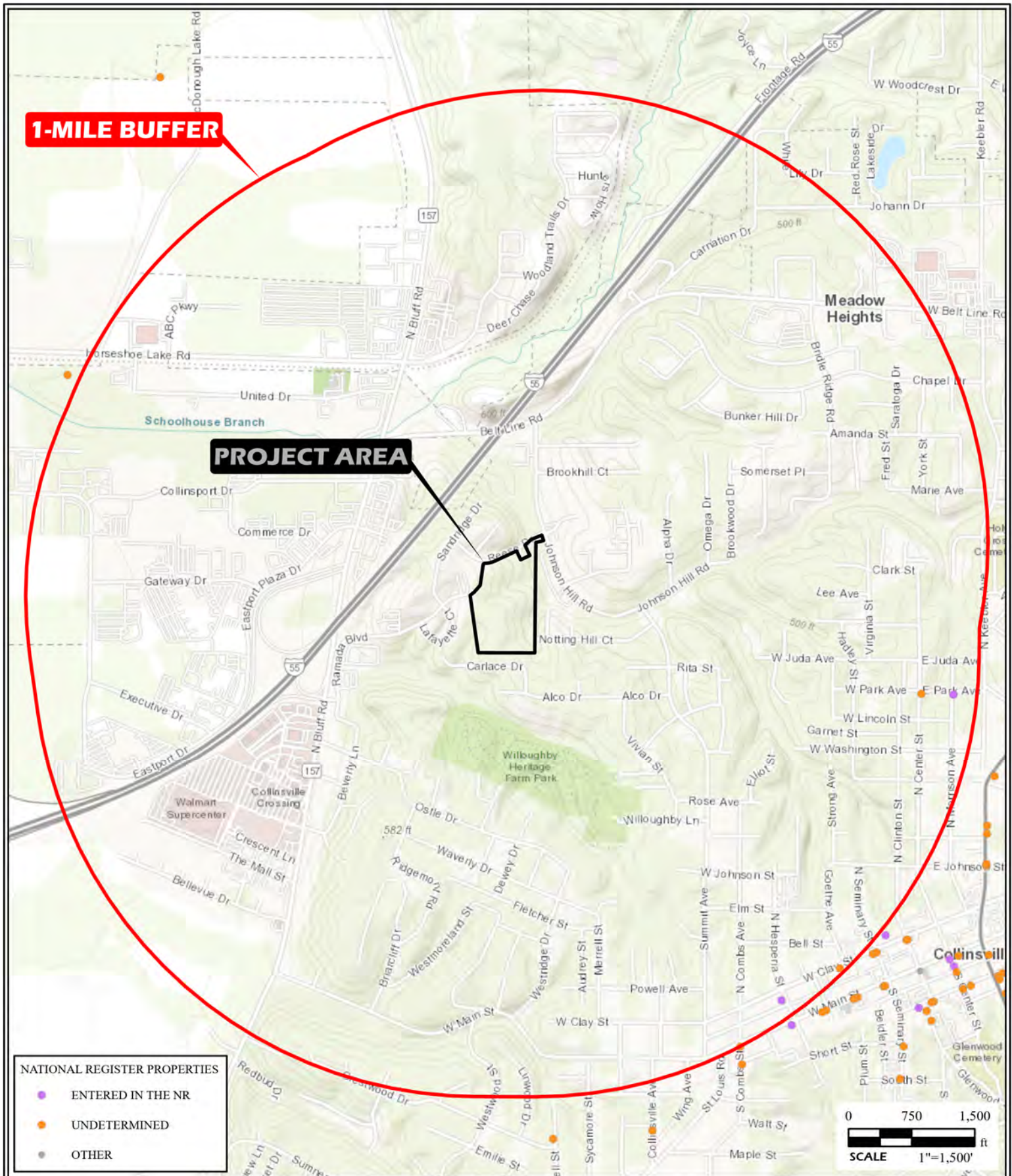
DRAWN BY	CJD	FIGURE DATE	JOB NUMBER
CHECKED BY	BMC	08/05/2025	2023-1906.40

GENERAL NOTES/LEGEND

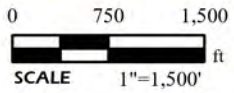
USGS TOPOGRAPHIC MAP
 MONKS MOUND, ILLINOIS QUADRANGLE
 DATED 2024
 10' CONTOURS



FIGURE
 18



- NATIONAL REGISTER PROPERTIES**
- ENTERED IN THE NR
 - UNDETERMINED
 - OTHER



PROJECT NAME
 HAVEN HILL ACRES
 COLLINSVILLE, ILLINOIS

HARGIS MAP

DRAWN BY	CJD	FIGURES DATE	JOB NUMBER
CHECKED BY	BMC	08/05/2025	2023-1906.40

GENERAL NOTES/LEGEND




BASEMAP OBTAINED FROM ARCGIS ONLINE; STREET MAP
[HTTP://GOTO.ARCGISONLINE.COM/MAPS/WORLD_STREET_MAP](http://goto.arcgisonline.com/maps/world_street_map)

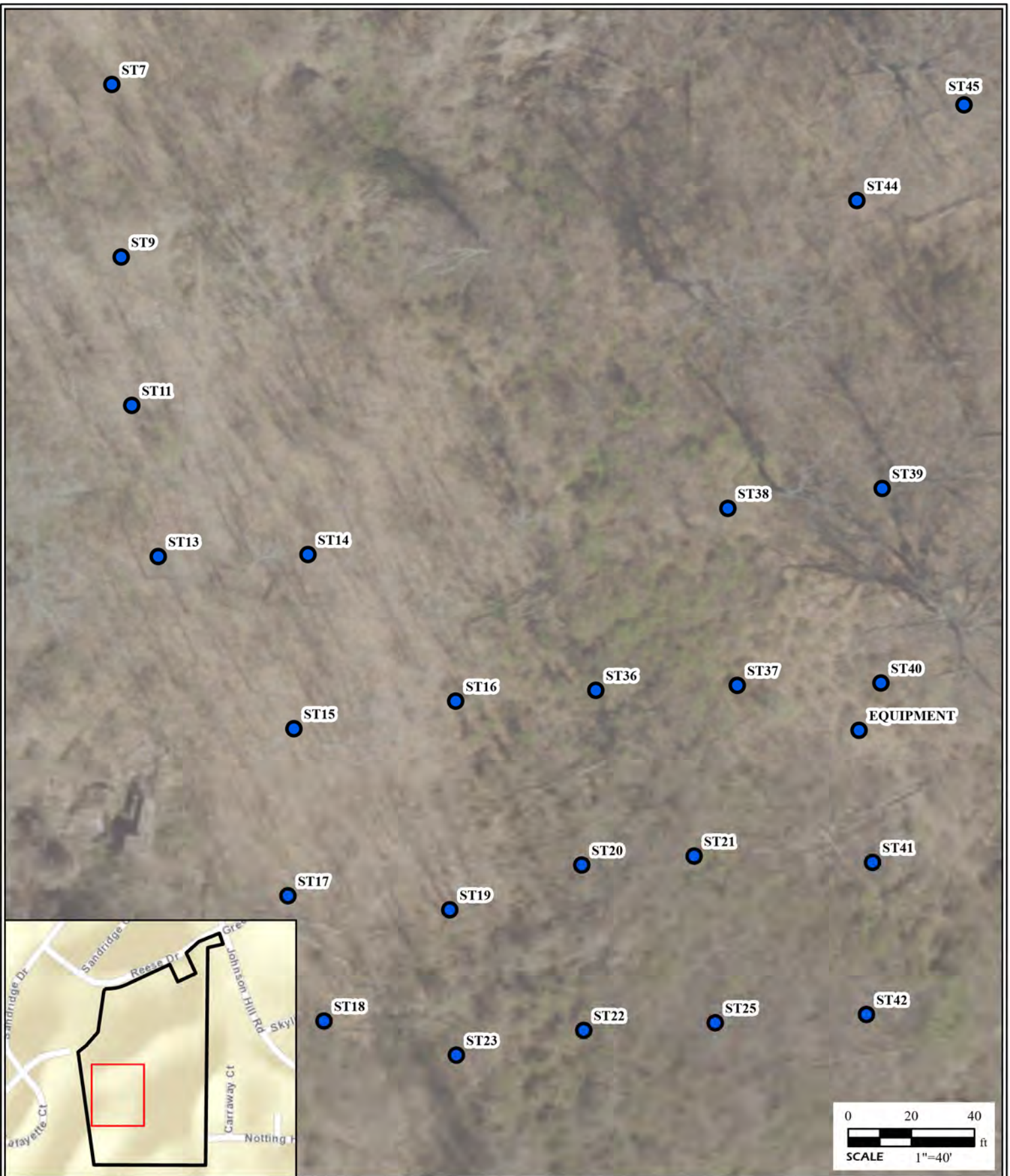
DIMENSIONS AND LOCATIONS ARE APPROXIMATE; ACTUAL MAY VARY.
 DRAWING SHALL NOT BE USED OUTSIDE THE CONTEXT OF THE REPORT FOR WHICH IT WAS GENERATED.





FIGURE
 19



	PROJECT NAME HAVEN HILL ACRES COLLINSVILLE, ILLINOIS			GENERAL NOTES/LEGEND  APPROXIMATE PHOTO POINT LOCATIONS AERIAL PHOTOGRAPH OBTAINED FROM ARCGIS ONLINE; WORLD IMAGERY DIMENSIONS AND LOCATIONS ARE APPROXIMATE; ACTUAL MAY VARY. DRAWING SHALL NOT BE USED OUTSIDE THE CONTEXT OF THE REPORT FOR WHICH IT WAS GENERATED.		
	GROUND CONDITIONS MAP					FIGURE 20
	DRAWN BY	CJD	FIGURES DATE			08/08/2025
CHECKED BY	BMC					



	PROJECT NAME HAVEN HILL ACRES COLLINSVILLE, ILLINOIS			GENERAL NOTES/LEGEND ● NEGATIVE SHOVEL TEST LOCATIONS □ PROJECT AREA AERIAL PHOTOGRAPH OBTAINED FROM ARCGIS ONLINE; WORLD IMAGERY DIMENSIONS AND LOCATIONS ARE APPROXIMATE; ACTUAL MAY VARY. DRAWING SHALL NOT BE USED OUTSIDE THE CONTEXT OF THE REPORT FOR WHICH IT WAS GENERATED.	
	TESTING MAP				
	DRAWN BY CJD CHECKED BY BMC	FIGURES DATE 08/06/2025	JOB NUMBER 2023-1906.40		



PROJECT NAME
**HAVEN HILL ACRES
 COLLINSVILLE, ILLINOIS**

TESTING MAP

DRAWN BY	CJD	FIGURES DATE	JOB NUMBER
CHECKED BY	BMC	08/06/2025	2023-1906.40

GENERAL NOTES/LEGEND

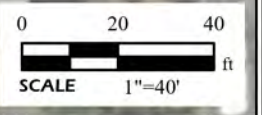
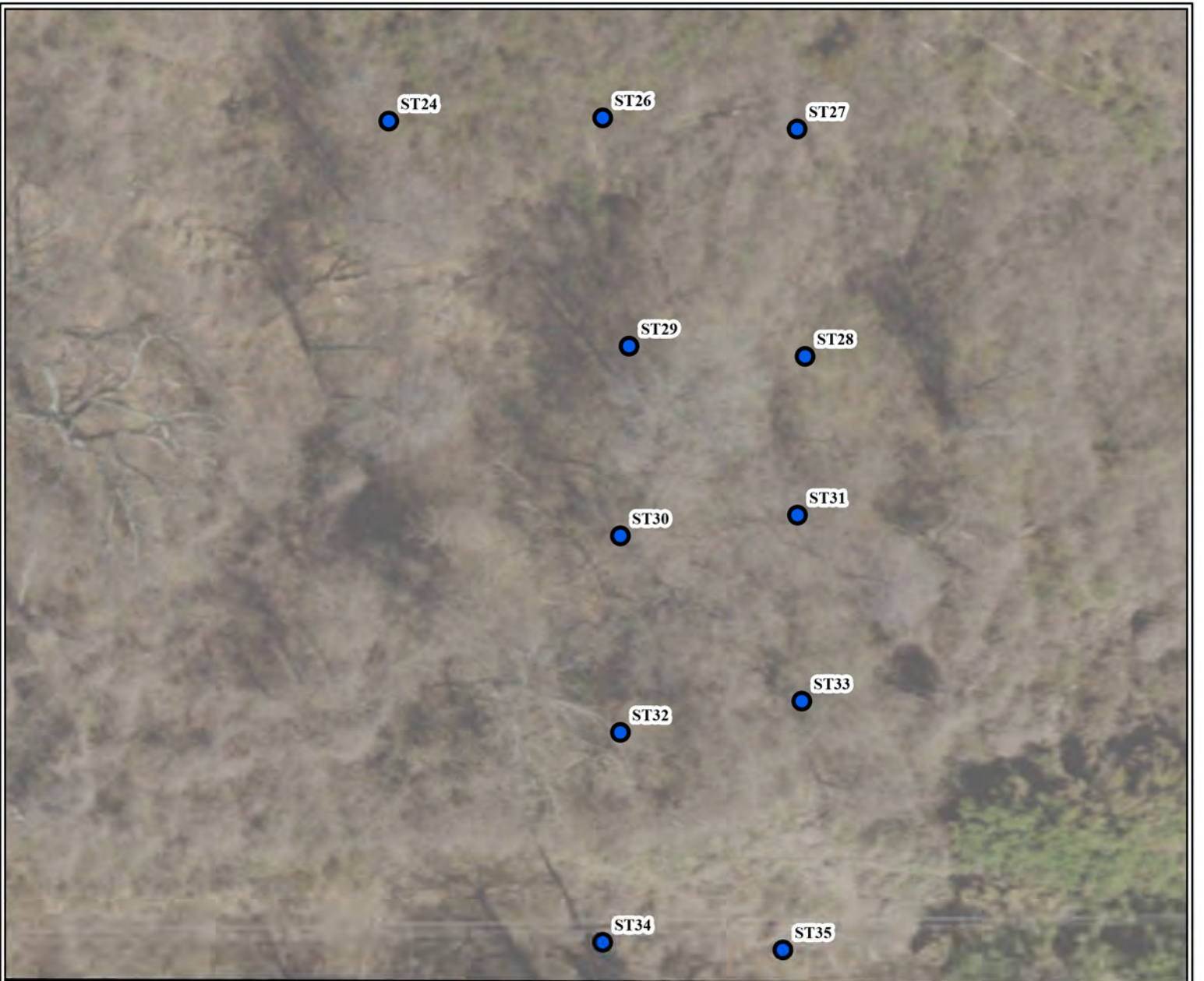
- NEGATIVE SHOVEL TEST LOCATIONS
- PROJECT AREA

AERIAL PHOTOGRAPH OBTAINED FROM ARCGIS ONLINE; WORLD IMAGERY

DIMENSIONS AND LOCATIONS ARE APPROXIMATE; ACTUAL MAY VARY.
 DRAWING SHALL NOT BE USED OUTSIDE THE CONTEXT OF THE REPORT FOR WHICH IT WAS GENERATED.



**FIGURE
 21C**



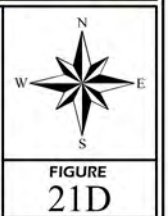
PROJECT NAME			
HAVEN HILL ACRES COLLINSVILLE, ILLINOIS			
TESTING MAP			
DRAWN BY	CJD	FIGURES DATE	JOB NUMBER
CHECKED BY	BMC	08/06/2025	2023-1906.40

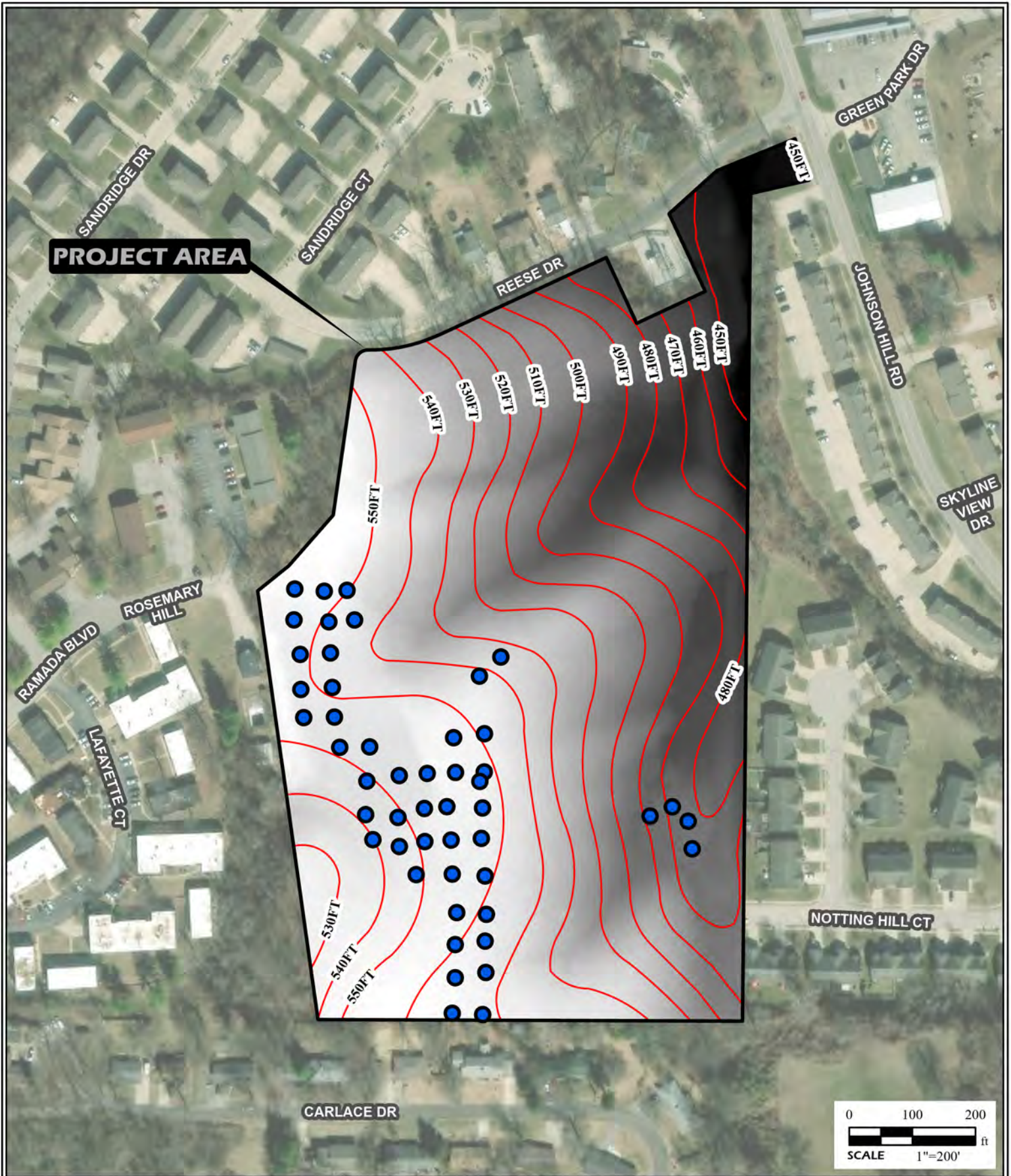
GENERAL NOTES/LEGEND

- NEGATIVE SHOVEL TEST LOCATIONS
- PROJECT AREA

AERIAL PHOTOGRAPH OBTAINED FROM ARCGIS ONLINE; WORLD IMAGERY

DIMENSIONS AND LOCATIONS ARE APPROXIMATE; ACTUAL MAY VARY.
DRAWING SHALL NOT BE USED OUTSIDE THE CONTEXT OF THE REPORT FOR WHICH IT WAS GENERATED.





PROJECT NAME
 HAVEN HILL ACRES
 COLLINSVILLE, ILLINOIS

TESTING MAP

DRAWN BY	CJD	FIGURES DATE	JOB NUMBER
CHECKED BY	BMC	08/06/2025	2023-1906.40

GENERAL NOTES/LEGEND

- NEGATIVE SHOVEL TEST LOCATIONS

AERIAL PHOTOGRAPH OBTAINED FROM ARCGIS ONLINE; WORLD IMAGERY

DIMENSIONS AND LOCATIONS ARE APPROXIMATE; ACTUAL MAY VARY.
 DRAWING SHALL NOT BE USED OUTSIDE THE CONTEXT OF THE REPORT FOR WHICH IT WAS GENERATED.



FIGURE
 22

Appendix B



Photo 1. Project overview, facing west.



Photo 2. Project overview, facing northwest.



Photo 3. View of large slope and gully, facing north.



Photo 4. View of typical slope, facing south.



Photo 5. View of slope, facing south.



Photo 6. View of Shovel Test 5, facing west.



Photo 7. View of Shovel Test 38, facing southeast.



Photo 8. View of typical berm, facing northeast.



Photo 9. View of gravel around power substation.



Photo 10. View of creek, facing south.

Appendix C



Illinois
Department of
**Natural
Resources**

JB Pritzker, Governor • Natalie Phelps Finnie, Director
One Natural Resources Way • Springfield, Illinois 62702-1271

www.dnr.illinois.gov

Madison County
Collinsville
SW of Reese Dr & Johnson Hill Rd
Section:29-Township:3N-Range:8W
IHDA
New Construction of Permanent Supportive Housing,
Haven Hill Acres

PLEASE REFER TO: SHPO LOG #015061825

SURVEY REQUEST

July 1, 2025

James Mundloch
JRG Holdings-Belleville, LLC
528 Leonard Avenue
St. Louis, MO 63119

Thank you for requesting comments from our office concerning the possible effects of the project referenced above on cultural resources. Our comments are required by Section 106 of the National Historic Preservation Act of 1966 (16 USC 470), as amended, and its implementing regulations, 36 CFR 800: Protection of Historic Properties.

The project area has never been surveyed and may contain significant archaeological resources. Accordingly, a Phase I archaeological **survey** to locate, identify, and record all archaeological resources within the project area will be **required**. This decision is based upon our understanding that there has not been any large-scale disturbance of the ground surface (excluding agricultural activities) such as major construction activity within the project area which would have destroyed existing cultural resources prior to your project. If the area has been heavily disturbed prior to your project, please contact our office with the appropriate written and/or photographic evidence. The area(s) that need(s) to be surveyed include(s) all area(s) that will be developed as a result of the issuance of the federal agency permit or the granting of the federal grants, funds, or loan guarantees that have prompted this review.

A list of archaeological contracting services, maintained as a courtesy, is available on our website. The SHPO Log Number or a copy of this letter should be provided to the selected professional archaeological contractor to ensure that the survey results are connected to your project. If you have further questions, please contact Jeff Kruchten, Principal Archaeologist, at 217/785-1279 or jeff.kruchten@illinois.gov.

We have found that no historic architectural properties will be affected by the project, as proposed. If you have questions about this, please contact Rita Baker, Cultural Resources Manager, at 217/785-4998 or rita.e.baker@illinois.gov.

Sincerely,

Carey L. Mayer, AIA
Deputy State Historic Preservation Officer

c: Zane Nyhus, Illinois Housing Development Authority