



**Beverly Hills City Council Liaison / Recreation and Parks Commission Committee will conduct a Special Meeting, at the following time and place, and will address the agenda listed below:**

**CITY OF BEVERLY HILLS  
455 N. Rexford Drive  
Room 280A  
Beverly Hills, CA 90210**

**IN-PERSON / TELEPHONIC / VIDEO CONFERENCE MEETING**

**Beverly Hills Liaison Meeting  
[www.beverlyhills.org/MyCommittee](http://www.beverlyhills.org/MyCommittee)  
Meeting ID: 516 191 2424  
**Passcode: 90210****

**You can also dial in by phone:  
+1 669 900 9128 US  
+1 833 548 0282 (Toll-Free)**

**One tap mobile  
+16699009128,,5161912424# US  
+18335480282,,5161912424# US (Toll-Free)**

**Thursday, May 22, 2025  
11:30 AM**

***Please be advised that pre-entry metal detector screening requirements are now in place in City Hall. Members of the public are requested to plan visits accordingly.***

*In the interest of maintaining appropriate social distancing, members of the public can view this meeting through live webcast at [www.beverlyhills.org/live](http://www.beverlyhills.org/live) and on BH Channel 10 or Channel 35 on Spectrum Cable, and can participate in the teleconference/video conference by using the link above. Written comments may be emailed to [mayorandcitycouncil@beverlyhills.org](mailto:mayorandcitycouncil@beverlyhills.org) and will also be taken during the meeting when the topic is being reviewed by the Beverly Hills City Council Liaison / Recreation and Parks Commission Committee. Beverly Hills Liaison meetings will be in-person at City Hall.*

**AGENDA**

- 1) Public Comment
  - a. Members of the public will be given the opportunity to directly address the Committee on any item listed on the agenda.
  
- 2) Arnaz Mini Park – Playground Equipment Update

3) La Cienega Park – Playground Improvement Project

4) Adjournment



**Huma Ahmed**  
City Clerk

**Posted: May 16, 2025**

**A DETAILED LIAISON AGENDA PACKET IS AVAILABLE FOR REVIEW AT  
[WWW.BEVERLYHILLS.ORG](http://WWW.BEVERLYHILLS.ORG)**



Pursuant to the Americans with Disabilities Act, the City of Beverly Hills will make reasonable efforts to accommodate persons with disabilities. If you require special assistance, please call (310) 285-1014 (voice) or (310) 285-6881 (TTY). Providing at least twenty-four (24) hours advance notice will help to ensure availability of services. City Hall, including Room 280A is wheelchair accessible.



## STAFF REPORT

**Meeting Date:** May 22, 2025

**To:** Recreation and Parks Council Liaisons Mayor Nazarian & Councilmember Mary Wells

**From:** Mandana Motahari, City Architect  
Adrine Ovasapyan, Recreation Services Manager

**Subject:** Arnaz Mini Park – Playground Improvements Project

**Attachments:** Concept Renderings

---

### **INTRODUCTION**

This item provides the Councilmembers Council Liaisons assigned to the Recreation and Parks Commission with an outline of the discussion points for today's meeting.

### **BACKGROUND**

Deeded to the City in 1925, Arnaz Park is one of the City's seven Public Mini Parks. The concept of mini parks in Beverly Hills was initiated by Edward E. Tufte who was a resident of Beverly Hills for 41 years and served the City as City Engineer and Public Works Director from 1959 to 1976. Mr. Tufte persuaded City Council to buy small, scattered parcels of land and transform them into beautifully landscaped public parks. Arnaz Park underwent major improvements and was rededicated in 2008.

### **DISCUSSION**

The 7,500 square feet park includes hardscape and landscape areas with mature trees, a water feature, a small picnic area, and a 475 square feet playground. As part of 2008 improvements a fire engine-style play equipment was installed and have been serving as the only play equipment at this playground. While regular maintenance has been performed on this apparatus, it has reached its useful life and is due for replacement.

On December 16, 2024, and January 28, 2025, the Recreation and Parks Commission were presented with a conceptual design for upgrading the existing playground equipment at Arnaz Mini Park. The new playground will replace the existing fire engine on the oval shaped safety surface. New design includes play equipment in the form of colorful cubes suitable for climbing in, on, and through creating play experience in small spaces, the interior of cubes includes tactile play amenities. The selected equipment provides increased play value.

Meeting Date: May 22, 2025

Framing the playground environment are freestanding colorful poles with oversized butterfly shapes on top creating whimsical elements and creating butterflies' patterns on the ground from the shades. All proposed changes are designed to work within the limited area of existing safety surface geometry.

The poured-in-place safety rubber surface is ADA accessible and relatively new. Surfaces will only be replaced where the new play equipment is situated in a pattern that is compatible and complimentary with existing design.

**FISCAL IMPACT**

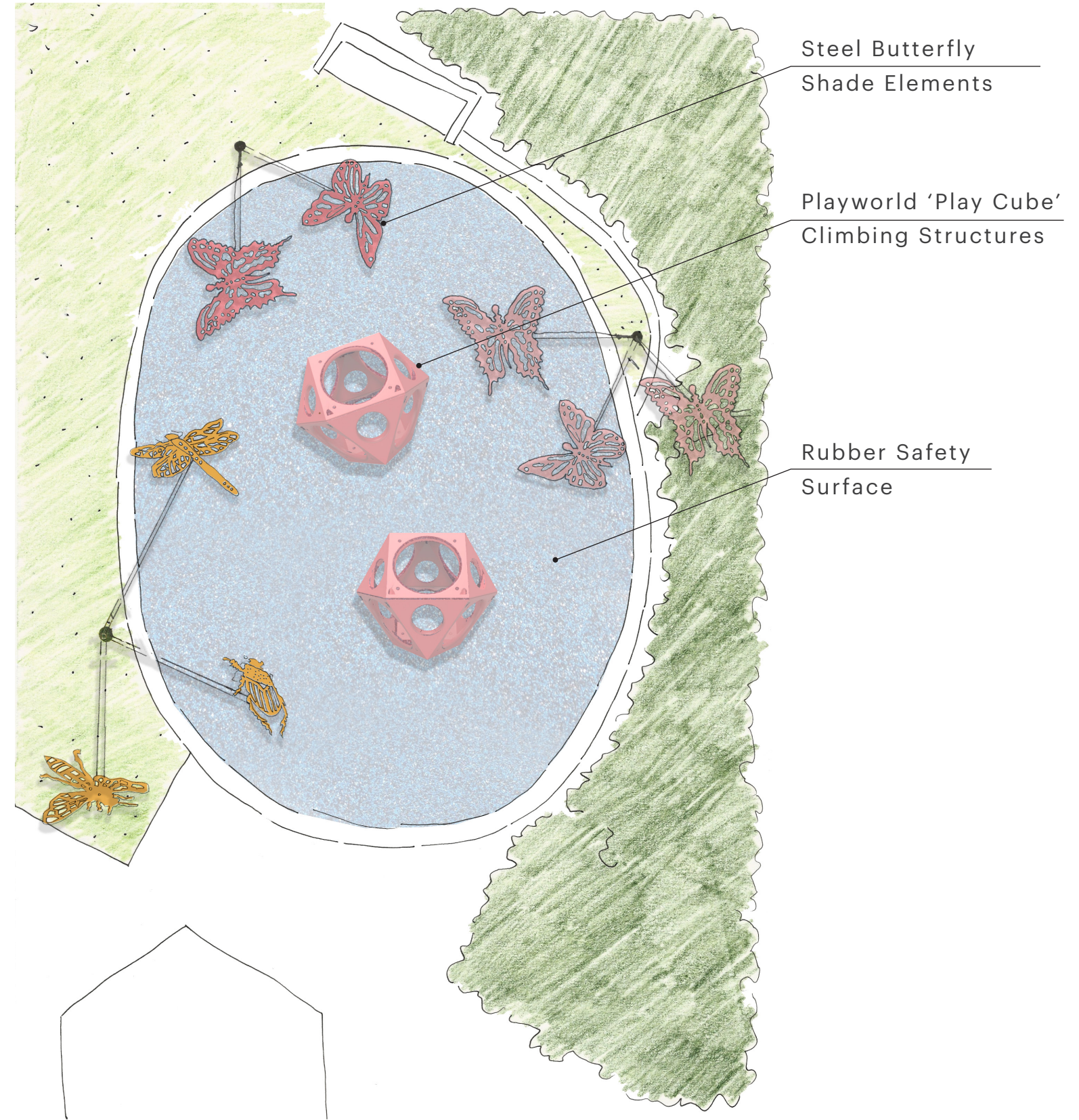
No financial impact at this time.

**RECOMMENDATION**

Staff is seeking City Council Liaison's input on the information and conceptual renderings shared. The approved design will be presented to the full Council in June 2025.

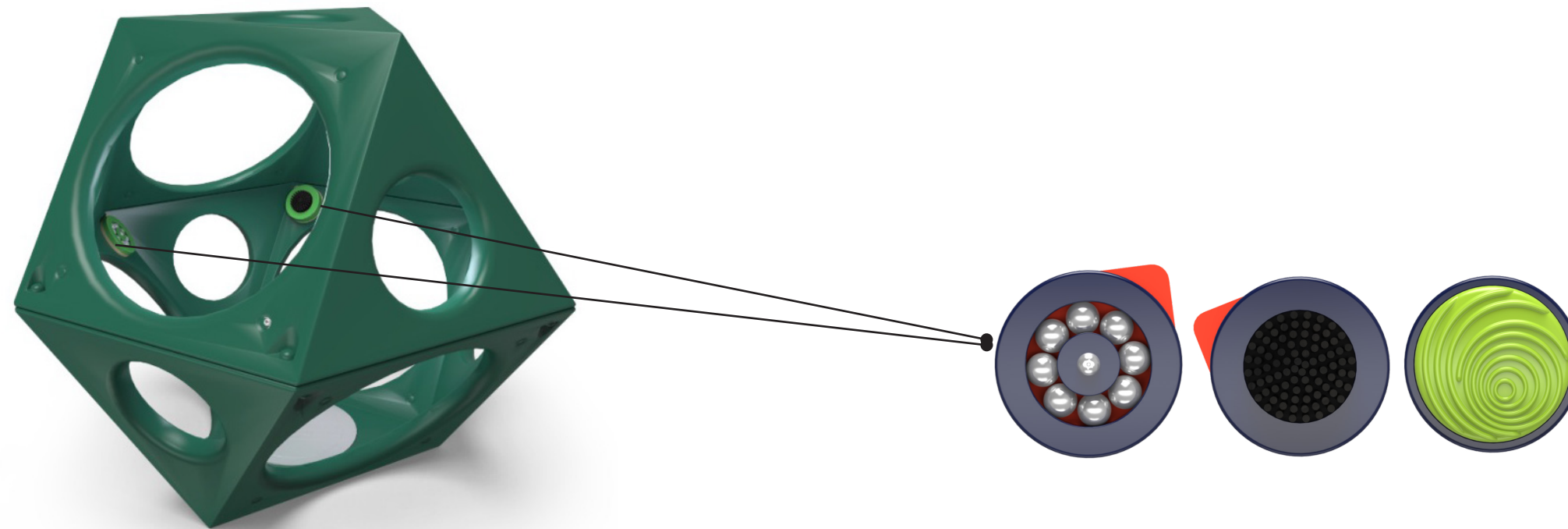
Stephanie Harris,  
Director of Community Services  
\_\_\_\_\_  
Approved By

# **ATTACHMENT 1**

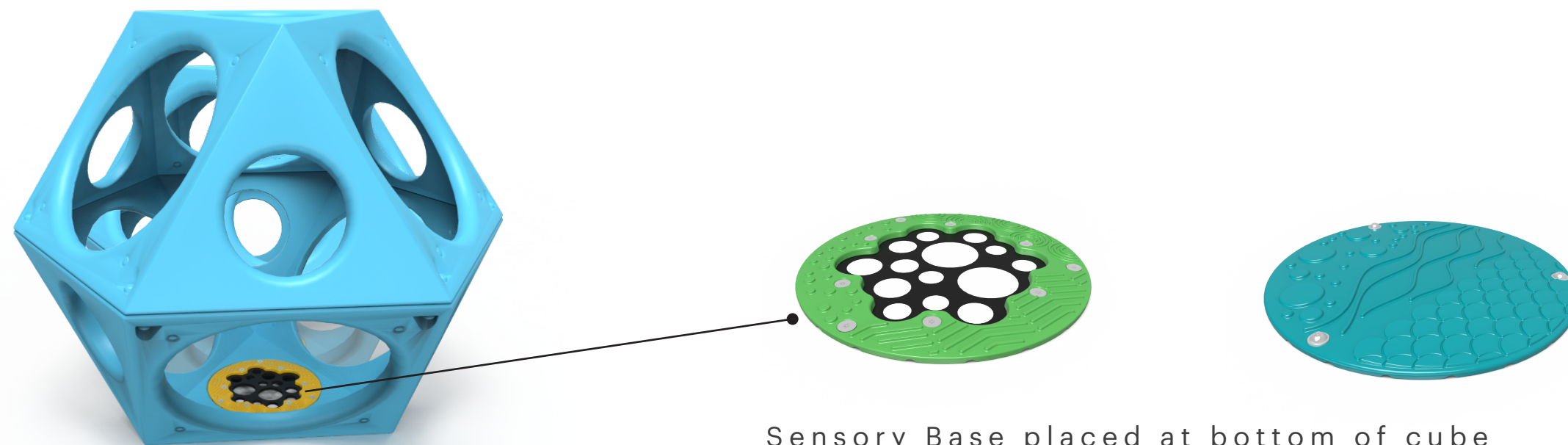


PLAY CUBE STRUCTURES + BUTTERFLY SHADE CANOPIES

ARNAZ MINI PARK | DECEMBER 13, 2024



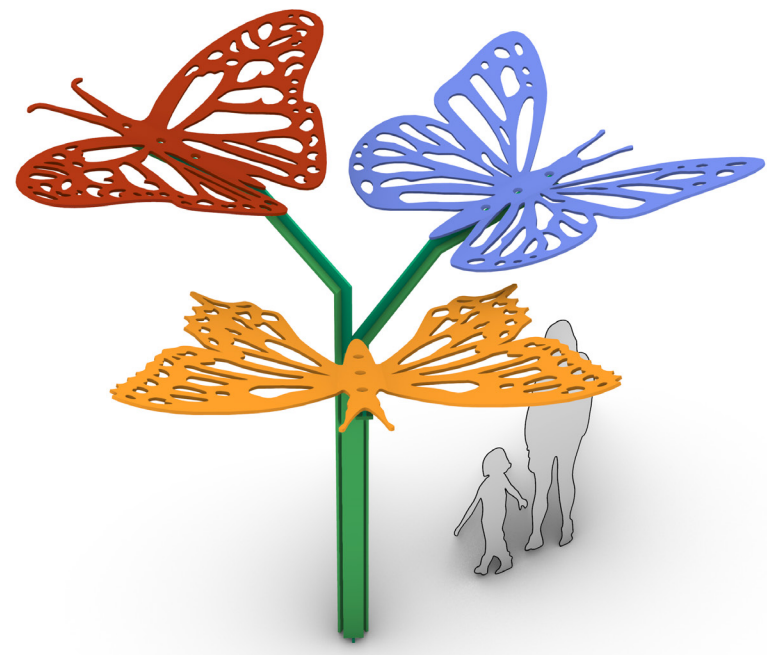
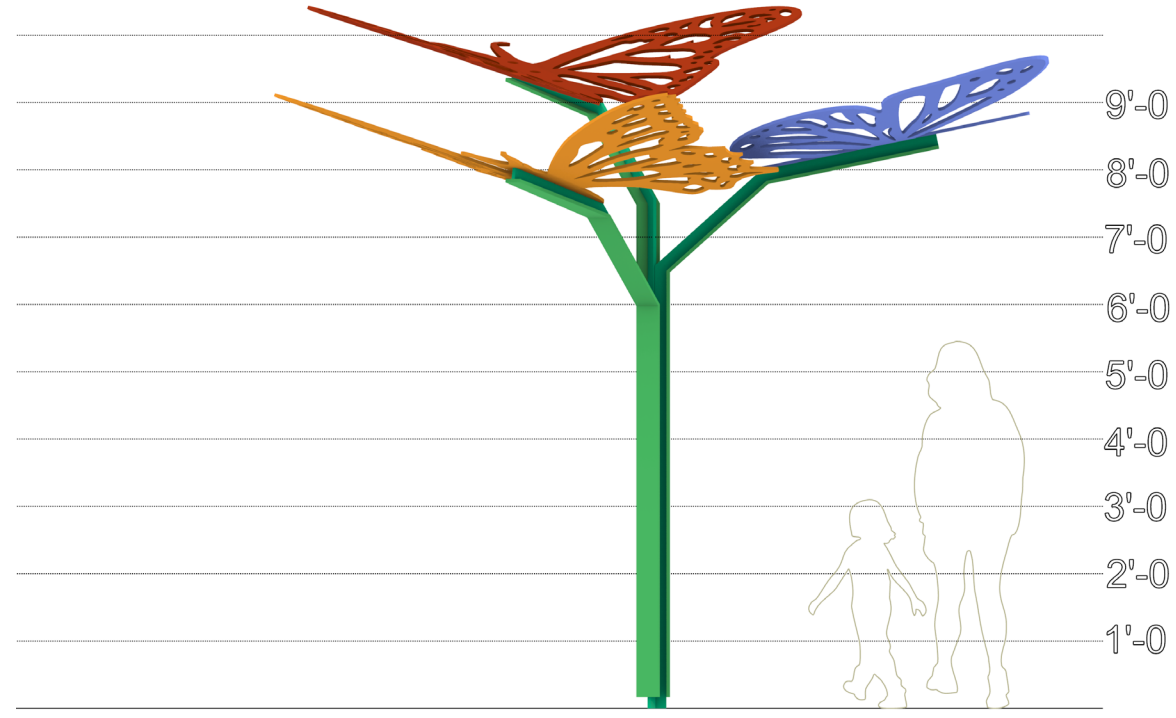
Sensory Kit placed inside cube



Sensory Base placed at bottom of cube

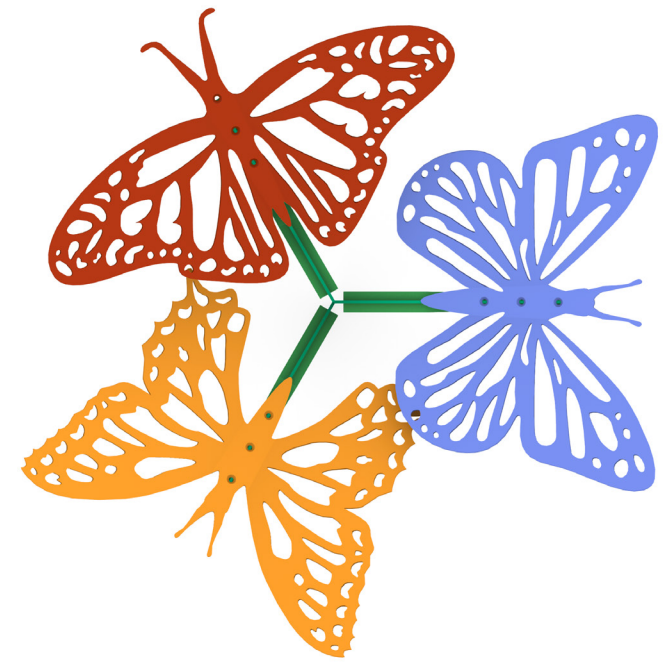
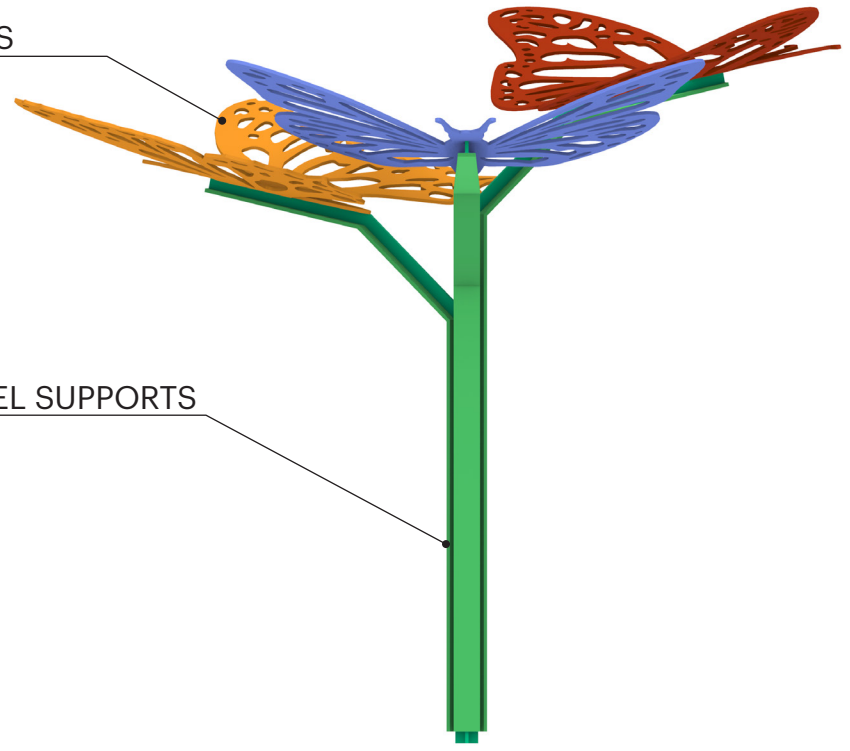
PLAY CUBE SENSORY ELEMENTS + ACCESSORIES

ARNAZ MINI PARK | DECEMBER 13, 2024



STEEL BUTTERFLY CANOPIES  
FROM STUDIO BOLOZ

PAINTED STEEL SUPPORTS



BUTTERFLY SHADE CANOPIES  
ARNAZ MINI PARK | DECEMBER 13, 2024



## STAFF REPORT

**Meeting Date:** May 22, 2025

**To:** Recreation and Parks Council Liaisons Mayor Nazarian & Councilmember Mary Wells

**From:** Mandana Motahari, City Architect  
Joana Torres, Community Services Manager

**Subject:** La Cienega Park – Playground Improvements Project

**Attachments:** Existing Photos and Concept Renderings

---

### **INTRODUCTION**

City Council prioritized focusing efforts at La Cienega Park. Staff was asked to gather feedback from the community to be included in the design phase of the playground.

Staff drafted and published a survey on August 28, 2024. The survey was mailed to City of Beverly Hills residents residing within 500 feet of the park, emailed to 17,000 individuals via our registration system, and posted at various locations throughout the park. The survey was also published on Community Services' social media sites, advertised in local newspapers, and at the weekly Farmer's Market. The survey closed on September 17, 2024, receiving over 570 responses. The results of the survey were presented to the Commission and shared with the City's Project Management team to develop conceptual designs.

### **DISCUSSION**

The Recreation and Parks Commission was presented with a conceptual design that will replace the existing 12,400 square feet playground at La Cienega Park on March 25, 2025. The preliminary design for La Cienega playground is a direct response to the feedback received from park patrons during survey period. The design concept is an abstract natural landscape playscape consisting of rubber mound "hills" that unify the environment joining multiple active and passive play zones. Each zone is age-specific, providing a variety of interactive play components while keeping a cohesive and engaging play experience

Play equipment manufacturer, Kompan, is proposed to be the primary equipment source. Kompan is the same manufacturer used in the Roxbury Park playground and allows for replacement parts to be readily available. The little kids play zone is comprised of age 2-5 play structure components, nature themed springers, and parent and child swing seats. The older kids play zone is for ages 5-12 and consists of a variety of elements including a slide, swings and rotating swivel play platforms.

Meeting Date: May 22, 2025

The space is divided by a “riverbed” concept of oversized concrete pebbles which lead to a story time/performance stage, allowing for potential outdoor youth programming. The scattering of pebbles serves as a skate-deterrent, with the smooth rounded edges of the boulders also acting as an undesirable skateboarding surface. The “elemental forest” alludes to childhood play in a wooded forest through colorful vertical posts grouped in groves throughout the playscape and providing additional barriers for skating.

Shade is provided by rigid, spherical shades above the story time/performance stage, canopies built into the play equipment, and trees provide shade at seating areas around the periphery of the site. The backed seating allows for single and group use. Fences and gates enclose the entirety of the site, with ADA accessible ramps added at three entry points. The ADA accessible ground plane consists of poured-in-place safety rubber surface, with visual breaks provided by color and topographical change.

**FISCAL IMPACT**

No financial impact at this time.

**RECOMMENDATION**

Staff is seeking the City Council Liaison’s input on the information and conceptual renderings shared. The approved designed will be presented to the full City Council in June 2025.

Stephanie Harris,  
Director of Community Services  

---

Approved By

# **ATTACHMENT 1**



EXISTING CONDITIONS

LA CIENEGA PLAYGROUND | MARCH 10, 2025

Mark Tessier  
— Landscape  
Architecture Inc



CONCEPT PLAN

LA CIENEGA PLAYGROUND | MARCH 10, 2025